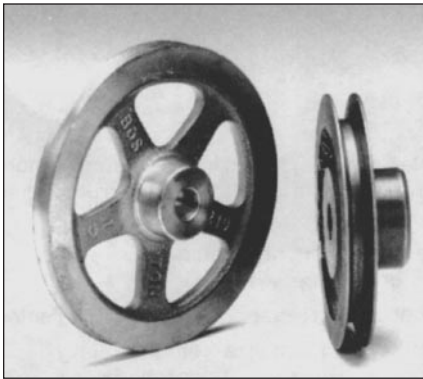


# GROOVED PULLEYS

## ROUND BELT TYPE

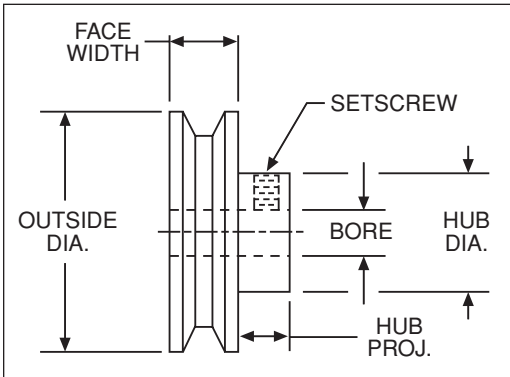
G1200



**BRASS IRON AND STEEL**  
**BORE SIZES FROM 3/16" TO 3/4"**  
**COMPLETE WITH STANDARD SETSCREWS**

ALL DIMENSIONS IN INCHES  
 ORDER BY CATALOG NUMBER OR ITEM CODE

Bore	Outside Diameter	Hub Dia.	Project	V Groove	Style	Catalog Number	Item Code
<b>BRASS—3/16" ROUND BELT (or smaller)—1/4" FACE</b>							
3/16	1/2	1/2	1/4	74°	Plain	G1214	18700
	7/8	5/8		46°		G1215	18702
1/4	1	5/8	5/16	46°	Plain	G1216	18704
	1-1/2					G1217	18706
5/16	2	5/8	5/16	46°	Webbed Spoked Spoked	G1218	18708
	3	3/4				G1219	18710
	4	3/4				G1220	18712
<b>IRON†—3/8" ROUND BELTS (or smaller)—1/2" FACE</b>							
1/2	1	15/16	1/2	53°	Plain	G1202*	18718
	1-1/2	1				G1203*	18720
	2	1				G1204*	18722
	3	1-1/4				G1205	18724
5/8	4	1-5/8	3/4	53°	Webbed	G1206	18726
	5					G1207	18728
	6					G1208	18730
3/4	8	1-3/4	1	53°	Spoked	G1209	18732



\*Pulleys with 10 to 13 grooves have one set screw and are steel.  
 All others have two at 90°  
 †Outside diameter, sides, grooves, hole and ends of hub finished.

### STANDARD TOLERANCES

Dimensions	Tolerance
BORE	All +.001 - .000

## MINIATURE HTD TIMING BELT DRIVES

### BASIC CONSTRUCTION

Timing belts are essentially flat belts with the addition of evenly spaced teeth along the surface that contacts toothed pulleys. Power is transmitted smoothly and without slippage. Pulley pitch diameters are larger than their outside diameters and the belt pitch lines lie within the flat portion. Tension members are molded in the flat portion to serve as load-carrying elements. Miniature HTD timing belts have deep curvilinear tooth forms, as contrasted to trapezoidal for conventional timing belts. Greater strength, lower tooth pressures and decreased stress concentration result in superior performance.

### SELECTION

The following general guidelines apply to selection of miniature HTD timing belts and pulleys:

Design with ample reserve horsepower capacity and apply the proper service factors.

The belt must have six or more teeth in engagement with the smaller pulley to carry rated Horsepower.

Avoid small pulley diameters where practical to assure satisfactory belt life.

Belt speed should not exceed 6500 feet per minute.

At least one pulley in the drive should be flanged.

For vertical shafts or where center distance exceeds eight times the smaller pulley diameter, both pulleys should be flanged.

Horsepower Rating Tables provide ratings for operation no more than ten hours per day under uniform loading. Selection procedures is as follows:

1. Select Service Factor for chart below.
2. Determine Design Horsepower.

**Design Horsepower = Application Horsepower x Service Factor**

3. Select small pulley and belt size from the rating tables, choosing a combination whose rating does not exceed the Design Horsepower.
4. For speed increasing applications an additional amount must be added to the Service Factor.
5. For speeds higher than shown in Rating Tables, consult factory.

### SERVICE FACTORS

Load Classification	Service Factor
Uniform to 10 hrs./day	1.0
Uniform over 10 hrs./day Moderate Shock to 10 hrs./day	1.5
Moderate Shock over 10 hrs./day Heavy Shock to 10 hrs./day	2.0

### SPEED-UP DRIVES

Ratio Range	Additional Factor
1 through 1.24	0
1.25 through 1.74	0.1
1.75 through 2.49	0.2
2.50 through 3.49	0.3
3.50 and over	0.4

# MINIATURE TIMING BELTS & PULLEYS

## MINIATURE HTD TIMING BELT DRIVES (Continued) HORSEPOWER RATINGS

### 3mm PITCH—6mm WIDE BELT

NUMBER OF GROOVES ON THE SMALL PULLEY

		10	11	12	14	15	16	18	20	22	24	25	28	30	32
PD		.376	.414	.451	.526	.564	.602	.677	.752	.827	.902	.940	1.053	1.128	1.203
RPM of Small Pulley	100	.005	.005	.006	.007	.008	.009	.010	.011	.012	.013	.013	.016	.019	.020
	300	.016	.017	.018	.021	.023	.025	.029	.033	.037	.040	.041	.048	.055	.059
	500	.022	.024	.027	.030	.032	.035	.039	.043	.048	.053	.055	.062	.066	.070
	700	.031	.035	.037	.042	.046	.049	.054	.061	.068	.075	.078	.087	.092	.098
	1160	.040	.045	.050	.056	.061	.066	.072	.078	.089	.097	.101	.113	.120	.127
	1500	.052	.058	.064	.072	.078	.085	.093	.101	.115	.125	.130	.145	.155	.165
	1750	.061	.068	.075	.085	.091	.099	.108	.117	.134	.146	.152	.170	.182	.194
	2500	.067	.074	.080	.091	.101	.107	.117	.134	.148	.161	.168	.192	.200	.213
	3500	.094	.103	.113	.127	.141	.151	.165	.188	.207	.226	.236	.268	.278	.296

### 3mm PITCH—9mm WIDE BELT

NUMBER OF GROOVES ON THE SMALL PULLEY

		10	11	12	14	15	16	18	20	22	24	25	28	30	32
PD		.376	.414	.451	.526	.564	.602	.677	.752	.827	.902	.940	1.053	1.128	1.203
RPM of Small Pulley	100	.007	.008	.009	.011	.013	.014	.016	.017	.019	.021	.022	.025	.030	.032
	300	.025	.027	.029	.033	.036	.040	.046	.052	.059	.063	.066	.076	.087	.092
	500	.035	.038	.043	.048	.051	.055	.062	.068	.076	.084	.088	.098	.104	.111
	700	.049	.056	.059	.067	.073	.078	.085	.096	.107	.119	.124	.138	.146	.156
	1160	.063	.071	.079	.089	.097	.104	.114	.123	.141	.154	.160	.179	.190	.203
	1500	.082	.092	.101	.114	.123	.135	.147	.160	.182	.198	.206	.230	.246	.263
	1750	.097	.108	.119	.135	.144	.157	.171	.185	.212	.231	.241	.269	.289	.308
	2500	.106	.117	.127	.144	.160	.169	.185	.212	.235	.255	.266	.304	.317	.338
	3500	.149	.163	.179	.201	.223	.239	.262	.298	.328	.358	.372	.425	.441	.470

### 5mm PITCH—9mm WIDE BELT

NUMBER OF GROOVES ON THE SMALL PULLEY

		11	12	14	15	16	18	20	22	24	25	28	30
PD		.689	.752	.877	.940	1.003	1.128	1.253	1.379	1.504	1.566	1.754	1.880
RPM of Small Pulley	100	.021	.024	.027	.030	.033	.039	.042	.045	.051	.053	.063	.069
	300	.063	.069	.081	.090	.096	.108	.126	.138	.153	.159	.186	.204
	500	.090	.099	.117	.126	.132	.150	.165	.183	.198	.206	.231	.249
	700	.129	.138	.162	.174	.186	.210	.231	.255	.279	.291	.324	.348
	1160	.162	.180	.207	.225	.240	.270	.300	.327	.360	.375	.420	.447
	1500	.210	.231	.270	.291	.309	.348	.387	.423	.465	.484	.543	.579
	1750	.243	.270	.315	.339	.360	.405	.453	.495	.540	.562	.633	.675
	2500	.267	.291	.342	.366	.393	.441	.492	.540	.588	.613	.687	.735
	3500	.372	.405	.477	.510	.549	.615	.690	.756	.822	.856	.960	1.03

# MINIATURE TIMING BELTS & PULLEYS

## MINIATURE HTD TIMING BELT DRIVES (Continued) HORSEPOWER RATINGS

### 5mm PITCH—15mm WIDE BELT

NUMBER OF GROOVES ON THE SMALL PULLEY

	11	12	14	15	16	18	20	22	24	28	30
PD	.689	.752	.877	.940	1.003	1.128	1.253	1.379	1.504	1.754	1.880
RPM of Small Pulley	100	.038	.043	.049	.054	.060	.071	.076	.082	.093	.115
	300	.115	.126	.148	.164	.175	.197	.230	.252	.280	.340
	500	.164	.181	.214	.230	.241	.274	.302	.335	.362	.423
	700	.236	.252	.296	.318	.340	.384	.423	.467	.511	.593
	1160	.296	.329	.379	.412	.439	.494	.549	.599	.659	.769
	1500	.384	.423	.494	.533	.566	.637	.709	.775	.852	.995
	1750	.445	.494	.577	.621	.649	.742	.830	.907	.989	1.16
	2500	.489	.533	.626	.670	.720	.808	.901	.989	1.07	1.25
	3500	.681	.742	.874	.934	1.00	1.12	1.26	1.38	1.50	1.75

Belt life will be reduced for ratings to the left of the heavy line.

### CENTER DISTANCE

To calculate the approximate Belt Length:

$$BL = 2C + \frac{D_1 - D_2}{4C} + 1.57 (D_1 + D_2)$$

An approximate formula for center distance of a timing belt drive is:

$$C = \frac{P}{4} \left[ NB - \frac{N_1 + N_2}{2} \right] + \sqrt{\left( NB - \frac{N_1 + N_2}{2} \right)^2 - 2 \left( \frac{N_1 + N_2}{\pi} \right)^2}$$

$$BL = 2C + \frac{(D_1 - D_2)}{4C} + 1.57 (D_1 + D_2)$$

Where:

C = Center Distance—Inches

P = Belt Pitch—Inches

NB = Number of Teeth in Belt

N<sub>1</sub> = Number of Grooves in larger Pulley

N<sub>2</sub> = Number of Grooves in smaller Pulley

BL = Belt Length

D<sub>1</sub> = Pitch Diameter of larger Pulley

D<sub>2</sub> = Pitch Diameter of smaller Pulley

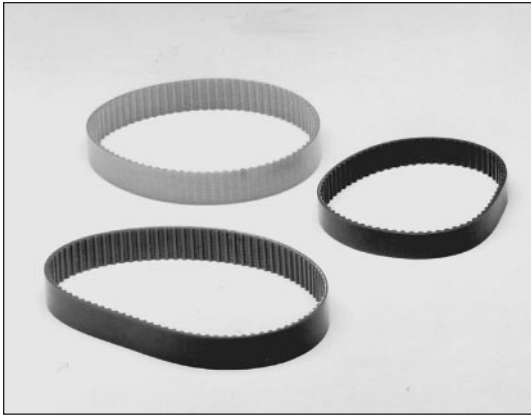
### INSTALLATION SUGGESTIONS

1. Use care in handling belts to avoid breakage of the reinforcing fibers.
2. Make sure shafts are parallel and pulleys in alignment.
3. Belt should fit snugly, neither too loose nor too tight. Avoid preload, which can cause premature failure.
4. Provision for some Center Distance adjustment will ease the installation and permit proper initial fitting of belts.

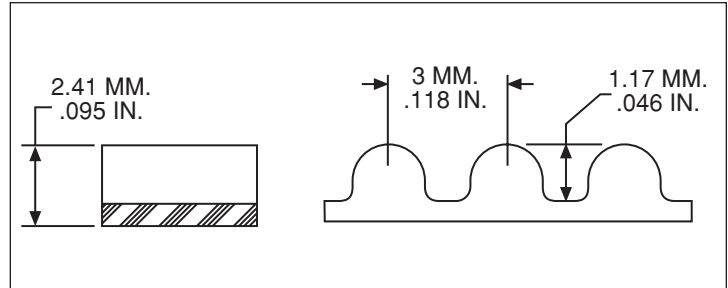
# MINIATURE HTD® TIMING BELTS

## 3MM PITCH

## 3M SERIES 6 AND 9MM WIDTHS



NEOPRENE-NYLON COVERED, FIBERGLASS REINFORCED  
 AMBIENT TEMPERATURE RANGE— -18°C TO +85°C  
 BREAKING STRENGTH—6 mm WIDTH – 74.4 KGS  
 9 mm WIDTH – 111.6 KGS



### ORDER BY CATALOG NUMBER OR ITEM CODE

Number of Grooves	Pitch Length		6mm Belt Width		9mm Belt Width	
	mm	Inch	Catalog Number	Item Code	Catalog Number	Item Code
35	105	4.134	3M035060	54214	3M035090	54290
37	111	4.370	3M037060	54215	3M037090	54291
48	144	5.669	3M048060	54216	3M048090	54292
49	147	5.787	3M049060	54217	3M049090	54293
50	150	5.905	3M050060	54218	3M050090	54294
52	156	6.142	3M052060	54219	3M052090	54295
53	159	6.260	3M053060	54220	3M053090	54296
56	168	6.614	3M056060	54221	3M056090	54297
59	177	6.968	3M059060	54222	3M059090	54298
60	180	7.087	3M060060	54223	3M060090	54299
65	195	7.677	3M065060	54224	3M065090	54300
67	201	7.913	3M067060	54225	3M067090	54301
68	204	8.031	3M068060	54226	3M068090	54302
69	207	8.150	3M069060	54227	3M069090	54303
70	210	8.268	3M070060	54228	3M070090	54304
71	213	8.386	3M071060	54229	3M071090	54305
75	225	8.858	3M075060	54230	3M075090	54306
78	234	9.213	3M078060	54231	3M078090	54307
80	240	9.449	3M080060	54232	3M080090	54308
84	252	9.921	3M084060	54233	3M084090	54309
85	255	10.039	3M085060	54234	3M085090	54310
89	267	10.512	3M089060	54236	3M089090	54312
90	270	10.630	3M090060	54237	3M090090	54313
92	276	10.866	3M092060	54238	3M092090	54314
94	282	11.102	3M094060	54239	3M094090	54315
95	285	11.220	3M095060	54240	3M095090	54316
96	288	11.339	3M096060	54241	3M096090	54317
97	291	11.457	3M097060	54242	3M097090	54318
99	297	11.693	3M099060	54243	3M099090	54319
100	300	11.811	3M100060	54244	3M100090	54320
104	312	12.283	3M104060	54245	3M104090	54321
106	318	12.520	3M106060	54246	3M106090	54322
111	333	13.110	3M111060	54247	3M111090	54323
112	336	13.228	3M112060	54248	3M112090	54324
113	339	13.346	3M113060	54249	3M113090	54325
115	345	13.583	3M115060	54250	3M115090	54326
119	357	14.055	3M119060	54251	3M119090	54327

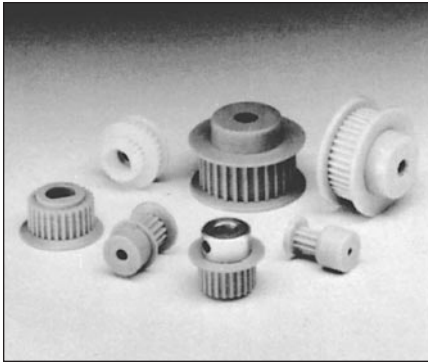
Number of Grooves	Pitch Length		6mm Belt Width		9mm Belt Width	
	mm	Inch	Catalog Number	Item Code	Catalog Number	Item Code
121	363	14.291	3M121060	54252	3M121090	54328
128	384	15.118	3M128060	54253	3M128090	54329
130	390	15.354	3M130060	54254	3M130090	54330
132	396	15.591	3M132060	54255	3M132090	54331
140	420	16.535	3M140060	54256	3M140090	54332
145	435	17.126	3M145060	54257	3M145090	54333
149	447	17.598	3M149060	54258	3M149090	54334
153	459	18.071	3M153060	54259	3M153090	54335
155	465	18.307	3M155060	54260	3M155090	54336
158	474	18.661	3M158060	54261	3M158090	54337
160	480	18.898	3M160060	54262	3M160090	54338
162	486	19.134	3M162060	54263	3M162090	54339
163	489	19.252	3M163060	54264	3M163090	54340
167	501	19.724	3M167060	54265	3M167090	54341
171	513	20.197	3M171060	54266	3M171090	54342
175	525	20.670	3M175060	54267	3M175090	54343
177	531	20.905	3M177060	54268	3M177090	54344
179	537	21.142	3M179060	54269	3M179090	54345
188	564	22.205	3M188060	54270	3M188090	54346
192	576	22.677	3M192060	54271	3M192090	54347
199	597	23.504	3M199060	54272	3M199090	54348
200	600	23.622	3M200060	54273	3M200090	54349
204	612	24.094	3M204060	54274	3M204090	54350
211	633	24.921	3M211060	54275	3M211090	54351
223	669	26.338	3M223060	54276	3M223090	54352
237	711	27.992	3M237060	54277	3M237090	54353
250	750	29.527	3M250060	54278	3M250090	54354
251	753	29.646	3M251060	54279	3M251090	54355
294	892	34.724	3M294060	54280	3M294090	54356
315	945	37.205	3M315060	54281	3M315090	54357
354	1062	41.811	3M354060	54282	3M354090	54358
375	1125	44.291	3M375060	54283	3M375090	54360
415	1245	49.016	3M415060	54284	3M415090	54361
421	1263	49.724	3M421060	54285	3M421090	54362
500	1500	59.055	3M500060	54286	3M500090	54363
510	1530	60.235	3M510060	54287	3M510090	54364
621	1863	73.346	3M621060	54288	3M621090	54365

®Registered trademark of UNIROYAL, INC.

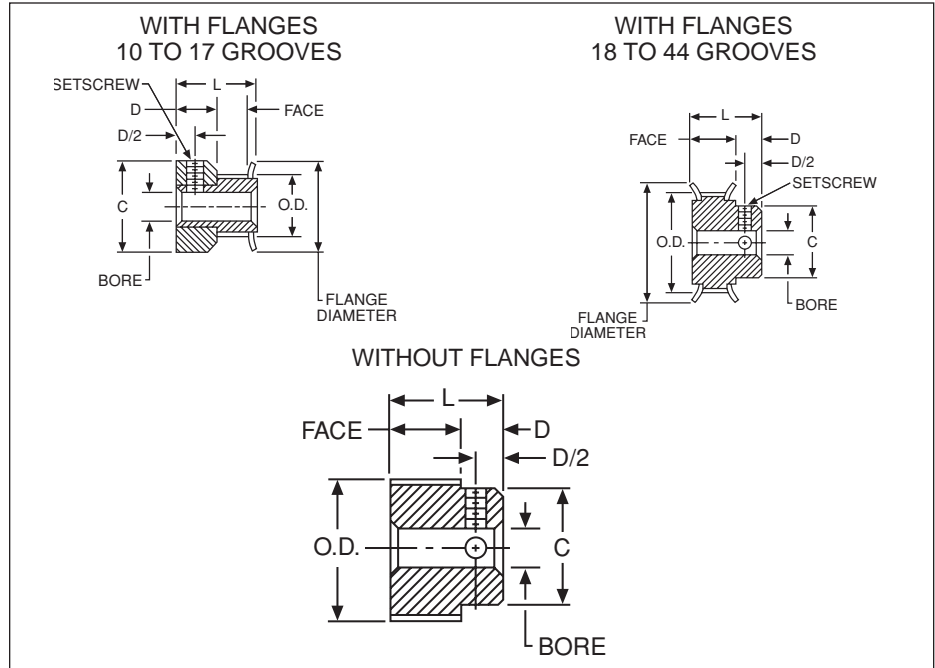
# TIMING BELT PULLEYS

## 3MM PITCH ALUMINUM

## PA SERIES FOR 6MM WIDE BELTS



ALUMINUM ALLOY – CLEAR ANODIZED  
COMPLETE WITH SETSCREWS



### STANDARD TOLERANCES

Dimensions		Tolerance
Bore	All	+0.001 to -0.000
	10-26 Grooves	+0.002 to -0.000
O.D.	28-48 Grooves	+0.003 to -0.000
	60-72 Grooves	+0.004 to -0.000

### ORDER BY CATALOG NUMBER OR ITEM CODE

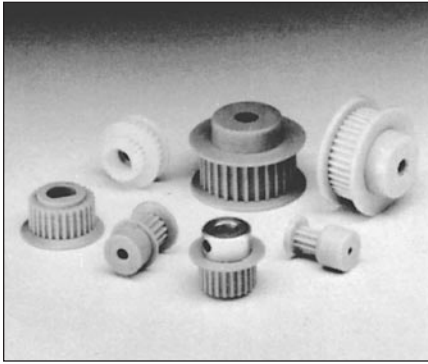
Number of Grooves	Pitch Dia.	O.D.	B	Face Width	C	D	L	Flange Dia.	Setscrew*	With Flanges		Without Flanges				
										Catalog Number	Item Code	Catalog Number	Item Code			
10	.376	.346	.125	.282	.505	15/64	9/16	.505	#4-40	PA3010DF060	54448	-	-			
11	.414	.384			.530			.530		PA3011DF060	54449	-	-			
12	.451	.421			.580			.580		PA3012DF060	54450	-	-			
13	.489	.459			.610			.610		PA3013DF060	54451	-	-			
14	.526	.496			.635			.635		PA3014DF060	54452	-	-			
15	.564	.534			.685			.685		PA3015DF060	54453	-	-			
16	.602	.572			.710			.710		PA3016DF060	54454	-	-			
17	.639	.609	.740	.740	PA3017DF060	54455	-	-								
18	.677	.647	.250	.386	.442	19/64	11/16	.790	#8-32	PA3018DF060	54456	PA3018NF060	54471			
19	.714	.684			.468			.815		PA3019DF060	54457	PA3019NF060	54472			
20	.752	.722			.500			.895		PA3020DF060	54458	PA3020NF060	54473			
22	.827	.797			.562			.945		PA3022DF060	54459	PA3022NF060	54474			
24	.902	.872			.625			1.025		PA3024DF060	54460	PA3024NF060	54475			
25	.940	.910			.625			1.060		PA3025DF060	54461	PA3025NF060	54476			
26	.977	.947			.625			1.105		PA3026DF060	54462	PA3026NF060	54477			
28	1.053	1.023			.701			1.173		PA3028DF060	54463	PA3028NF060	54478			
30	1.128	1.098			.776			1.250		PA3030DF060	54464	PA3030NF060	54479			
32	1.203	1.173			.851			1.323		PA3032DF060	54465	PA3032NF060	54480			
34	1.278	1.248			.921			1.398		PA3034DF060	54466	PA3034NF060	54481			
36	1.353	1.323			1.000			1.473		PA3036DF060	54467	PA3036NF060	54482			
38	1.429	1.399			1.075			1.549		PA3036DF060	54468	PA3038NF060	54483			
40	1.504	1.474			1.150			1.625		PA3040DF060	54469	PA3040NF060	54484			
44	1.654	1.624	1.300	1.775	PA3044DF060	54470	PA3044NF060	54485								
48	1.805	1.775	.3125	.407	-	21/64	47/64	-	-	-	-	PA3048NF060	54486			
50	1.880	1.850			-			-	-	-	-	-	PA3050NF060	54487	-	-
56	2.105	2.075			-			-	-	-	-	-	PA3056NF060	54488	-	-
60	2.256	2.226			-			-	-	-	-	-	PA3060NF060	54489	-	-
62	2.331	2.301			-			-	-	-	-	-	PA3062NF060	54490	-	-
72	2.707	2.677			-			-	-	-	-	-	-	-	PA3072NF060	54991

\*Pulleys with 10 to 13 grooves have one setscrew. All others have two at 90°

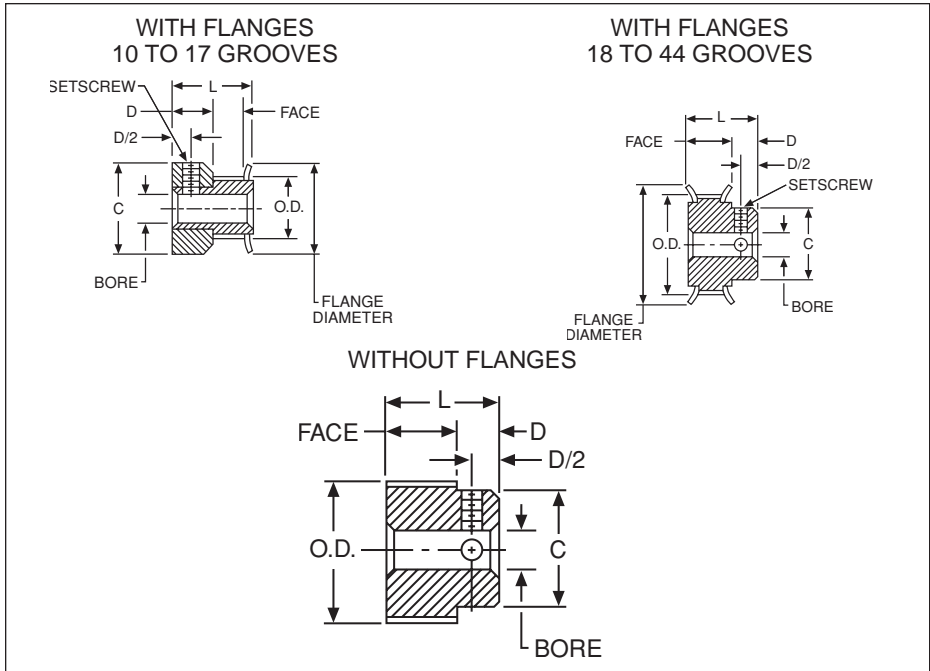
# TIMING BELT PULLEYS

**3MM PITCH  
ALUMINUM**

**PA SERIES  
FOR 9MM WIDE BELTS**



**ALUMINUM ALLOY – CLEAR ANODIZED  
COMPLETE WITH SETSCREWS**



**STANDARD TOLERANCES**

Dimensions		Tolerance
Bore	All	+0.001 to -0.000
	10-26 Grooves	+0.002 to -0.000
O.D.	28-48 Grooves	+0.003 to -0.000
	60-72 Grooves	+0.004 to -0.000

**ORDER BY CATALOG NUMBER OR ITEM CODE**

Number of Grooves	Pitch Dia.	O.D.	B	Face Width	C	D	L	Flange Dia.	Setscrew*	With Flanges		Without Flanges	
										Catalog Number	Item Code	Catalog Number	Item Code
10	.376	.346	.125	.401	.505	15/64	11/16	.505	#4-40	PA3010DF090	54492	-	-
11	.414	.384			.530			.530		PA3011DF090	54493	-	-
12	.451	.421	.1875	.506	.580	19/64	13/16	.580	#6-40	PA3012DF090	54494	-	-
13	.489	.459			.610			.610		PA3013DF090	54495	-	-
14	.526	.496			.635			.635		PA3014DF090	54496	-	-
15	.564	.534			.685			.685		PA3015DF090	54497	-	-
16	.602	.572			.710			.710		PA3016DF090	54498	-	-
17	.639	.609			.740			.740		PA3017DF090	54499	-	-
18	.677	.647			.250			.527		.442	27/32	7/8	.790
19	.714	.684	.468	.815		PA3019DF090	54501		PA3019NF090	54516			
20	.752	.722	.500	.895		PA3020DF090	54502		PA3020NF090	54517			
22	.827	.797	.562	.945		PA3022DF090	54503		PA3022NF090	54518			
24	.902	.872	.625	1.025		PA3024DF090	54504		PA3024NF090	54519			
25	.940	.910	.625	1.060		PA3025DF090	54505		PA3025NF090	54520			
26	.977	.947	.625	1.105		PA3026DF090	54506		PA3026NF090	54521			
28	1.053	1.023	.701	1.173		PA3028DF090	54507		PA3028NF090	54522			
30	1.128	1.098	.776	1.250		PA3030DF090	54508		PA3030NF090	54523			
32	1.203	1.173	.851	1.323		PA3032DF090	54509		PA3032NF090	54524			
34	1.278	1.248	.921	1.398	PA3034DF090	54510	PA3034NF090	54525					
36	1.353	1.323	1.000	1.473	PA3036DF090	54511	PA3036NF090	54526					
38	1.429	1.399	1.075	1.549	PA3036DF090	54512	PA3038NF090	54527					
40	1.504	1.474	1.150	1.625	PA3040DF090	54513	PA3040NF090	54528					
44	1.654	1.624	1.300	1.775	PA3044DF090	54514	PA3044NF090	54529					
48	1.805	1.775	.3125	.500	-	3/8	7/8	-		-	-	PA3048NF090	54530
50	1.880	1.850			-			-		PA3050NF090	54531		
56	2.105	2.075			-			-		PA3056NF090	54532		
60	2.256	2.226			-			-		PA3060NF090	54533		
62	2.331	2.301			-			-		PA3062NF090	54534		
66	-	-			-			-		-	-		
70	-	-			-			-		-	-		
72	2.707	2.677			-			-		-	-	PA3072NF090	54535

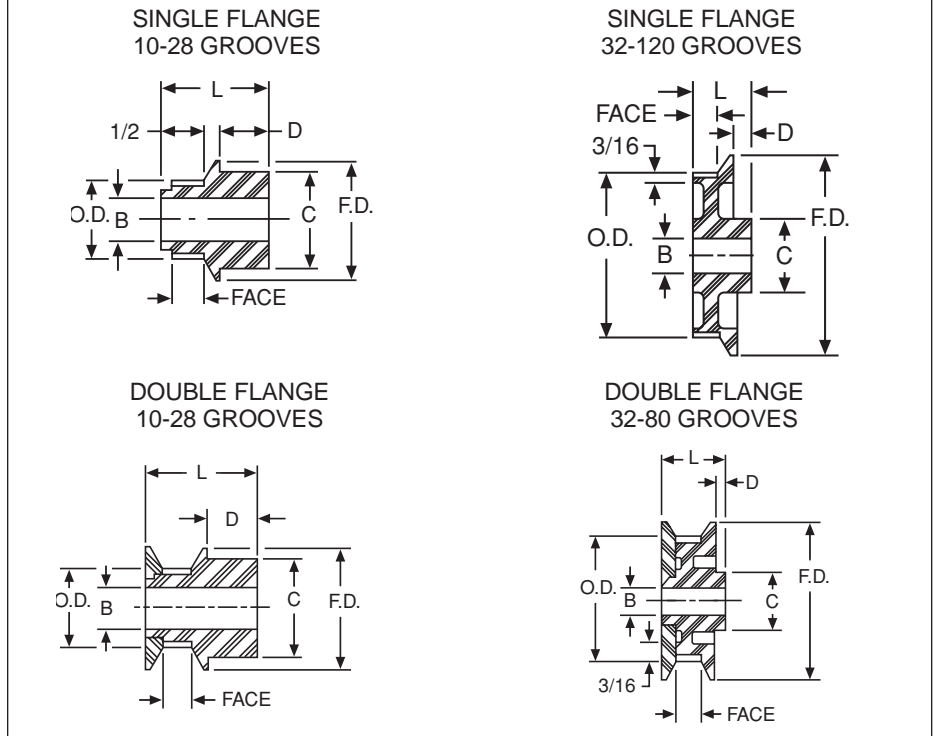
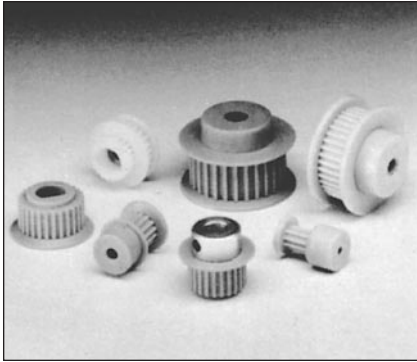
\*Pulleys with 10 to 13 grooves have one setscrew. All others have two at 90°

# TIMING BELT PULLEYS

## 3MM PITCH LEXAN

## PL SERIES FOR 9MM WIDE BELTS

### LEXAN – FIBERGLASS REINFORCED



#### STANDARD TOLERANCES

Dimension		Tolerances
Bore	All	+0.001 to -0.000

#### ORDER BY CATALOG NUMBER OR ITEM CODE

Number of Grooves	Pitch Dia.	O.D.	B	Face Width	C	D	L	Flange Dia.	Single Flange		Double Flange	
									Catalog Number	Item Code	Catalog Number	Item Code
10	.376	.346	3/16	7/16	5/8	1/4	3/4*	.63	PL3010SF090	54536	PL3010DF090	54560
11	.414	.384							PL3011SF090	54537	PL3011DF090	54561
12	.451	.421							PL3012SF090	54538	PL3012DF090	54562
13	.489	.459							PL3013SF090	54539	PL3013DF090	54563
14	.526	.496							PL3014SF090	54540	PL3014DF090	54564
15	.564	.534			11/16	1/4	13/16	.69	PL3015SF090	54541	PL3015DF090	54565
16	.602	.572							PL3016SF090	54542	PL3016DF090	54566
17	.639	.609							PL3017SF090	54543	PL3017DF090	54567
18	.677	.647							PL3018SF090	54544	PL3018DF090	54568
19	.714	.684							PL3019SF090	54545	PL3019DF090	54569
20	.752	.722	3/4	7/8	5/16	13/16**	.93	PL3020SF090	54546	PL3020DF090	54570	
22	.827	.797						PL3022SF090	54547	PL3022DF090	54571	
25	.940	.910						PL3025SF090	54548	PL3025DF090	54572	
28	1.053	1.023						PL3028SF090	54549	PL3028DF090	54573	
32	1.203	1.173						PL3032SF090	54550	PL3032DF090	54574	
36	1.353	1.323	5/16	1	3/8	7/8	1.44	PL3036SF090	54551	PL3036DF090	54575	
40	1.504	1.474						PL3040SF090	54552	PL3040DF090	54576	
48	1.805	1.775						PL3048SF090	54553	PL3048DF090	54577	
60	2.256	2.226						PL3060SF090	54554	PL3060DF090	54578	
72	2.707	2.677						PL3072SF090	54555	PL3072DF090	54579	
80	3.008	2.978	3/8	1/2	1	7/8	3.29	PL3080SF090	54556	PL3080DF090	54580	
84	3.158	3.128						PL3084SF090	54557	-	-	
96	3.609	3.579						PL3096SF090	54558	-	-	
120	4.511	4.481	-	-	-	-	3.83	PL3120NF090†	54559	-	-	

\*13/16" for Double Flanges

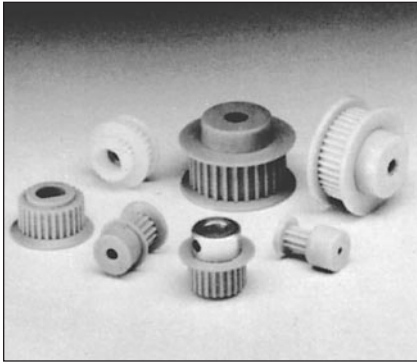
\*\*7/8" for Double Flanges

†No Flange

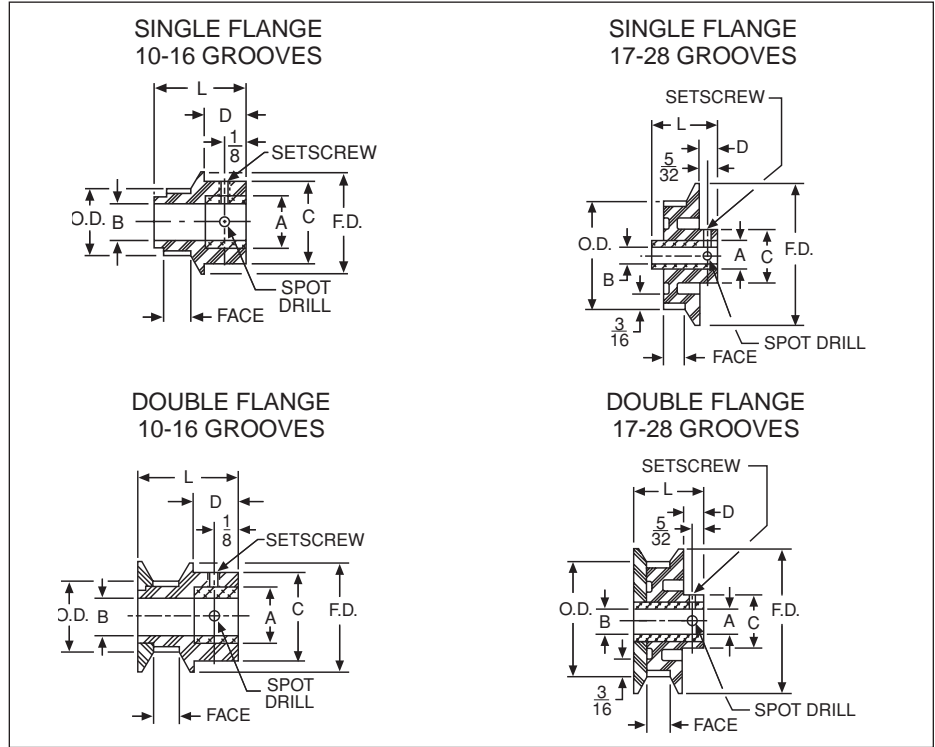
# TIMING BELT PULLEYS

## 3MM PITCH LEXAN

## PLB SERIES FOR 9MM WIDE BELTS



**LEXAN – FIBERGLASS REINFORCED  
KNURLED ALUMINUM INSERTS  
COMPLETE WITH SETSCREWS**



### STANDARD TOLERANCES

Dimension		Tolerance
Bore	All	+0.001 to -0.000

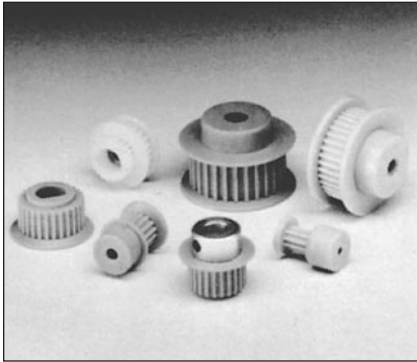
**ORDER BY CATALOG NUMBER OR ITEM CODE**

Number of Grooves	Pitch Dia.	O.D.	B	Face Width	C	D	Insert Dia.	L	Flange Dia.	Set-screw	Single Flange		Double Flanges	
											Catalog Number	Item Code	Catalog Number	Item Code
10	.376	.346	3/16	7/16	5/8	1/4	3/8	3/4	.63	#6-32	PLB3010SF090	54581	PLB3010DF090	54633
11	.414	.384									PLB3011SF090	54582	PLB3011DF090	54634
12	.451	.421									PLB3012SF090	54583	PLB3012DF090	54635
13	.489	.459									PLB3013SF090	54584	PLB3013DF090	54636
14	.526	.496									PLB3014SF090	54585	PLB3014DF090	54637
15	.564	.534									PLB3015SF090	54586	PLB3015DF090	54638
16	.602	.572	PLB3016SF090	54587	PLB3016DF090	54639								
17	.639	.609	3/16 1/4	7/16	11/16	1/4	3/8	13/16	.87	#6-32	PLB3017SF09-3/16	54588	PLB3017DF09-3/16	54640
18	.677	.647	3/16 1/4								PLB3017SF09-1/4	54589	PLB3017DF09-1/4	54641
19	.714	.684	3/16								PLB3018SF09-3/16	54590	PLB3018DF09-3/16	54642
											PLB3018SF09-1/4	54591	PLB3018DF09-1/4	54643
20	.752	.722	3/16 1/4								PLB3019SF09-3/16	54592	PLB3019DF09-3/16	54644
											PLB3019SF-09-1/4	54593	PLB3019DF09-1/4	54645
22	.827	.797	3/16	PLB3020SF09-3/16	54594	PLB3020DF09-3/16	54646							
				PLB3020SF09-1/4	54595	PLB3020DF09-1/4	54647							
25	.940	.910	1/4 5/16 3/8	3/4	1/2	3/8	1/2	1.06	#8-32	PLB3022SF09-3/16	54596	PLB3022DF09-3/16	54649	
										PLB3025SF09-1/4	54598	PLB3025DF09-1/4	54650	
28	1.053	1.023	1/4 5/16 3/8	3/4	1/2	3/8	1/2	1.19	#8-32	PLB3025SF09-5/16	54599	PLB3025DF09-5/16	54651	
										PLB3025SF09-3/8	54600	PLB3025DF09-3/8	54652	
										PLB3028SF09-1/4	54601	PLB3028DF09-1/4	54653	
28	1.053	1.023	5/16 3/8	3/4	1/2	3/8	1/2	1.24	#8-32	PLB3028SF09-5/16	54602	PLB3028DF09-5/16	54654	
										PLB3028SF09-3/8	54603	PLB3028DF09-3/8	54655	

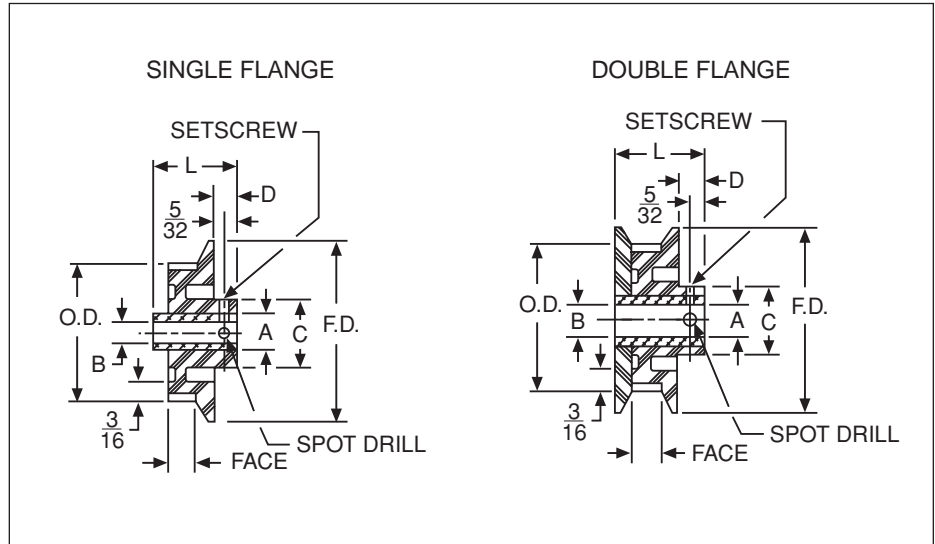
# TIMING BELT PULLEYS

**3MM PITCH  
LEXAN**

**PLB SERIES  
FOR 9MM WIDE BELTS**



**LEXAN – FIBERGLASS REINFORCED  
KNURLED ALUMINUM INSERTS  
COMPLETE WITH SETSCREWS**



**STANDARD TOLERANCES**

Dimension		Tolerance
Bore	All	+0.001 to -0.000

**ORDER BY CATALOG NUMBER OR ITEM CODE**

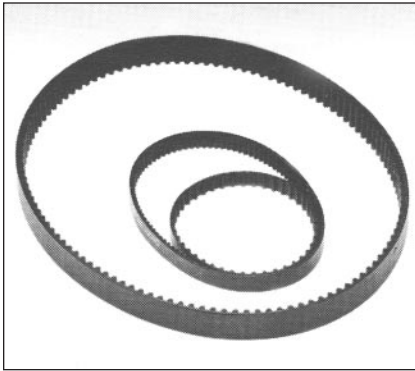
Number of Grooves	Pitch Dia.	O.D.	B	Face Width	C	D	Insert Dia.	L	Flange Dia.	Set-screw	Single Flange		Double Flanges	
											Catalog Number	Item Code	Catalog Number	Item Code
32	1.203	1.173	1/4	7/16	3/4	1/4	1/2	13/16	1.44	#8-32	PLB3032SF09-1/4	54604	PLB3032DF09-1/4	54656
			5/16								PLB3032SF09-5/16	54605	PLB3032DF09-5/16	54657
			3/8								PLB3032SF09-3/8	54606	PLB3032DF09-3/8	54658
36	1.353	1.323	1/4	7/16	7/8	1/4	1/2	13/16	1.57	#8-32	PLB3036SF09-1/4	54607	PLB3036DF09-1/4	54659
			5/16								PLB3036SF09-5/16	54608	PLB3036DF09-5/16	54660
			3/8								PLB3036SF09-3/8	54609	PLB3036DF09-3/8	54661
40	1.504	1.474	1/4	7/16	7/8	1/4	1/2	13/16	1.76	#8-32	PLB3040SF09-1/4	54610	PLB3040DF09-1/4	54662
			5/16								PLB3040SF09-5/16	54611	PLB3040DF09-5/16	54663
			3/8								PLB3040SF09-3/8	54612	PLB3040DF09-3/8	54664
48	1.805	1.775	1/4	7/16	7/8	1/4	1/2	13/16	2.02	#8-32	PLB3048SF09-1/4	54613	PLB3048DF09-1/4	54665
			5/16								PLB3048SF09-5/16	54614	PLB3048DF09-5/16	54666
			3/8								PLB3048SF09-3/8	54615	PLB3048DF09-3/8	54667
60	2.256	2.226	5/16	7/16	7/8	1/4	1/2	13/16	2.46	#10-32	PLB3060SF09-5/16	54616	PLB3060DF09-5/16	54668
			3/8								PLB3060SF09-3/8	54617	PLB3060DF09-3/8	54669
			1/2								PLB3060SF09-1/2	54618	PLB3060DF09-1/2	54670
72	2.707	2.677	5/16	7/16	7/8	1/4	1/2	13/16	2..92	#10-32	PLB3072SF09-5/16	54619	PLB3072DF09-5/16	54671
			3/8								PLB3072SF09-3/16	54620	PLB3072DF09-3/8	54672
			1/2								PLB3072SF09-1/2	54621	PLB3072DF09-1/2	54673
80	3.008	2.978	5/16	7/16	7/8	1/4	1/2	13/16	3.29	#10-32	PLB3080SF09-5/16	54622	PLB3080DF09-5/16	54674
			3/8								PLB3080SF09-3/8	54623	PLB3020DF09-3/8	54675
			1/2								PLB3080SF09-1/2	54624	PLB3080DF09-1/2	54676
84	3.158	3.128	5/16	7/16	7/8	1/4	1/2	13/16	3.38	#10-32	PLB3084SF09-5/16	54625	-	-
			3/8								PLB3084SF09-3/8	54626	-	-
			1/2								PLB3084SF09-1/2	54627	-	-
96	3.609	3.579	5/16	7/16	7/8	1/4	1/2	13/16	3.83	#10-32	PLB3096SF09-5/16	54628	-	-
			3/8								PLB3096SF09-3/8	54629	-	-
			1/2								PLB3096SF09-1/2	54630	-	-
120	4.511	4.481	3/8	7/16	7/8	1/4	1/2	7/8	-	#10-32	PLB3120NF09-3/8*	54631	-	-
			1/2								PLB3120NF09-1/2*	54632	-	-

†7/8" for Double Flange  
\*No Flange

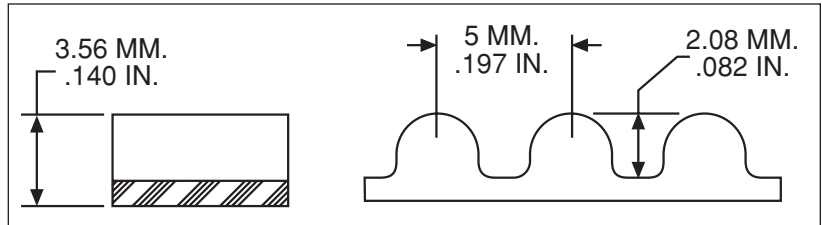
# MINIATURE HTD® TIMING BELTS

## 5MM PITCH

## 5M SERIES 9 AND 15MM WIDTHS



NEOPRENE-NYLON COVERED, FIBERGLASS REINFORCED  
 AMBIENT TEMPERATURE RANGE— -18°C TO +85°C  
 BREAKING STRENGTH—6 mm WIDTH – 234 KGS  
 9 mm WIDTH – 390 KGS



### ORDER BY CATALOG NUMBER OR ITEM CODE

Number of Grooves	Pitch Length		9mm Belt Width		15mm Belt Width	
	mm	Inch	Catalog Number	Item Code	Catalog Number	Item Code
64	320	12.598	—	—	5M064150	54407
66	330	12.992	5M066090	54367	5M066150	54408
70	350	13.779	5M070090	54368	5M070150	54409
75	375	14.764	5M075090	54369	5M075150	54410
80	400	15.748	5M080090	54370	5M080150	54411
85	425	16.732	5M085090	54371	5M085150	54412
90	450	17.716	5M090090	54372	5M090150	54413
95	475	18.700	5M095090	54373	5M095150	54414
100	500	19.685	5M100090	54374	5M100150	54415
107	535	21.063	5M107090	54376	5M107150	54417
113	565	22.244	5M113090	54377	5M113150	54418
120	600	23.622	5M120090	54378	5M120150	54419
123	615	24.213	5M123090	54379	5M123150	54420
127	635	25.000	5M127090	54380	5M127150	54421
133	665	26.181	5M133090	54381	5M133150	54422
134	670	26.378	5M134090	54382	5M134150	54423
142	710	27.953	5M142090	54383	5M142150	54424
148	740	29.134	5M148090	54384	5M148150	54425
151	755	29.724	5M151090	54385	5M151150	54426
160	800	31.596	5M160090	54386	5M160150	54427
166	830	32.677	5M166090	54387	5M166150	54428
167	835	32.874	5M167090	54388	5M167150	54429
170	850	33.464	5M170090	54389	5M170150	54430
178	890	35.039	5M178090	54390	5M178150	54431
185	925	36.417	5M185090	54390	5M185150	54432
186	930	36.614	5M186090	54392	5M186150	54433
190	950	37.401	5M190090	54393	5M190150	54434
200	1000	39.370	5M200090	54394	5M200150	54435
210	1050	41.339	5M210090	54395	5M210150	54436
225	1125	44.291	5M225090	54396	5M225150	54437
254	1270	50.000	5M254090	54397	5M254150	54438
284	1420	55.905	5M284090	54398	5M284150	54439
319	1595	62.795	5M319090	54399	5M319150	54440
358	1790	70.472	5M358090	54400	5M358150	54441
360	1800	70.866	5M360090	54401	5M360150	54442
374	1870	73.622	5M374090	54402	5M374150	54443
379	1895	74.606	5M379090	54403	5M379150	54444
389	1945	76.575	5M389090	54404	5M389150	54445
400	2000	78.740	5M400090	54405	5M400150	54446
505	2525	99.409	5M505090	54406	5M505150	54447

©Registered trademark of UNIROYAL, INC.

# TIMING BELT PULLEYS

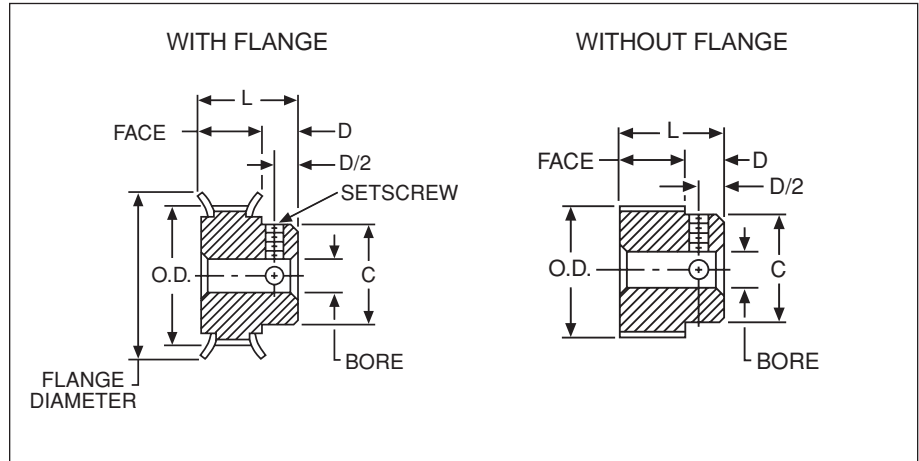
## 5MM PITCH ALUMINUM

## PA SERIES FOR 9MM WIDE BELTS



### STANDARD TOLERANCES

Dimension	Tolerance	
Bore	All	+0.001 to -0.000
O.D.	12-16 Grooves	+0.002 to -0.000
	17-32 Grooves	+0.003 to -0.000
	34-62 Grooves	+0.004 to -0.000
	72 Grooves	+0.005 to -0.000



**ALUMINUM ALLOY – CLEAR ANODIZED  
COMPLETE WITH SETSCREWS**

### ORDER BY CATALOG NUMBER OR ITEM CODE

Number of Grooves	Pitch Dia.	O.D.	B	Face Width	C	D	L	Flange Dia.	Setscrew*	With Flanges		Without Flanges					
										Catalog Number	Item Code	Catalog Number	Item Code				
12	.752	.707	.250		7/16	1/4	51/64	7/8	#8-32	PA5012DF090	54677	PA5012NF090	56494				
13	.815	.770			1/2			15/16		PA5013DF090	54678	PA5013NF090	56495				
14	.877	.832			1/2			1		PA5014DF090	54679	PA5014NF090	56496				
15	.940	.895			9/16			1-1/16		PA5015DF090	54680	PA5015NF090	56497				
16	1.003	.958			9/16			1-3/32		PA5016DF090	54681	PA5016NF090	56498				
17	1.065	1.020			5/8			1-3/16		PA5017DF090	54682	PA5017NF090	56499				
18	1.128	1.083			11/16			1-1/4		PA5018DF090	54683	PA5018NF090	54700				
19	1.191	1.146			3/4			1-5/16		PA5019DF090	54684	PA5019NF090	54701				
20	1.253	1.208			13/16			1-3/8		PA5020DF090	54685	PA5020NF090	54702				
22	1.379	1.334			15/16			1-1/2		PA5022DF090	54686	PA5022NF090	54703				
24	1.504	1.459			1			1-5/8		PA5024DF090	54687	PA5024NF090	54704				
25	1.566	1.521			1			1-11/16		PA5025DF090	54688	PA5025NF090	54705				
26	1.629	1.584			1-1/16	1-3/4	PA5026DF090	54689		PA5026NF090	54706						
28	1.754	1.709			35/64	1-3/16	5/16	55/64		1-7/8	PA5028DF090	54690	PA5028NF090	54707			
30	1.880	1.835			1-3/16	2	PA5030DF090	54691		PA5030NF090	54708						
32	2.005	1.960			1-1/4	2-1/8	PA5032DF090	54692		PA5032NF090	54709						
34	2.130	2.085			1-3/8	2-1/4	PA5034DF090	54693		PA5034NF090	54710						
36	2.256	2.211			.3125		1-1/2	25/64		15/16	-	#10-32	-	-	PA5036NF090	54711	
38	2.381	2.336									-		-	PA5038NF090	54712	PA5038NF090	54712
40	2.506	2.461									-		-	PA5040NF090	54713	PA5040NF090	54713
44	2.757	2.712									-		-	PA5044NF090	54714	PA5044NF090	54714
48	3.008	2.963									-		-	PA5048NF090	54715	PA5048NF090	54715
50	3.133	3.088									-		-	PA5050NF090	54716	PA5050NF090	54716
56	3.509	3.464									.375		-	PA5056NF090	54717	PA5056NF090	54717
60	3.760	3.715	-	-					PA5060NF090		54718		PA5060NF090	54718			
62	3.885	3.840	-	-	PA5062NF090	54719	PA5062NF090	54719									
72	4.511	4.466	-	-	PA5072NF090	54720	PA5072NF090	54720									

\*Pulleys with 12 and 13 grooves have one setscrew. All others have two at 90°

# TIMING BELT PULLEYS

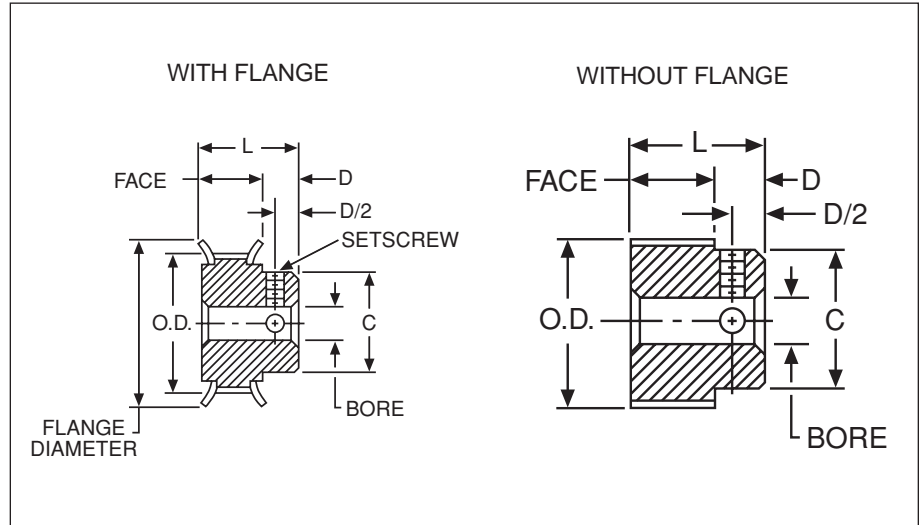
## 5MM PITCH ALUMINUM

## PA SERIES FOR 15MM WIDE BELTS



### STANDARD TOLERANCES

Dimension	Tolerance	
Bore	All	+0.001 to -0.000
O.D.	12-16 Grooves	+0.002 to -0.000
	17-32 Grooves	+0.003 to -0.000
	34-62 Grooves	+0.004 to -0.000
	72 Grooves	+0.005 to -0.000



**ALUMINUM ALLOY – CLEAR ANODIZED†  
COMPLETE WITH SETSCREWS**

### ORDER BY CATALOG NUMBER OR ITEM CODE

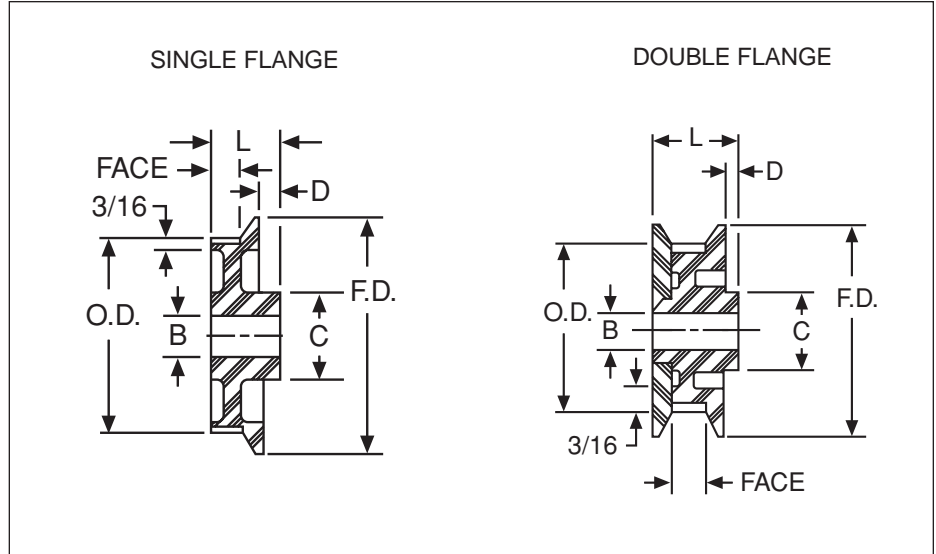
Number of Grooves	Pitch Dia.	O.D.	B	Face Width	C	D	L	Flange Dia.	Setscrew*	With Flanges		Without Flanges						
										Catalog Number	Item Code	Catalog Number	Item Code					
12	.752	.707	.250		7/16	1/4	1-1/32	7/8	#8-32	PA5012DF150	54721	PA5012NF150	54738					
13	.815	.770			1/2			15/16		PA5013DF150	54722	PA5013NF150	54739					
14	.877	.832			1/2			1		PA5014DF150	54723	PA5014NF150	54740					
15	.940	.895			9/16			1-1/16		PA5015DF150	54724	PA5015NF150	54741					
16	1.003	.958			9/16			1-3/32		PA5016DF150	54725	PA5016NF150	54742					
17	1.065	1.020			5/8			1-3/16		PA5017DF150	54726	PA5017NF150	54743					
18	1.128	1.083			11/16			1-1/4		PA5018DF150	54727	PA5018NF150	54744					
19	1.191	1.146			3/4			1-5/16		PA5019DF150	54728	PA5019NF150	54745					
20	1.253	1.208			13/16			1-3/8		PA5020DF150	54729	PA5020NF150	54746					
22	1.379	1.334			15/16			1-1/2		PA5022DF150	54730	PA5022NF150	54747					
24	1.504	1.459			1			1-5/8		PA5024DF150	54731	PA5024NF150	54748					
25	1.566	1.521			1			1-11/16		PA5025DF150	54732	PA5025NF150	54749					
26	1.629	1.584			1-1/16	1-3/4	PA5026DF150	54733		PA5026NF150	54750							
28	1.754	1.709			25/32	1-3/16	5/16	1-3/32		1-7/8	PA5028DF150	54734	PA5028NF150	54751				
30	1.880	1.835			1-3/16	2	PA5030DF150	54735		PA5030NF150	54752							
32	2.005	1.960			1-1/4	2-1/8	PA5032DF150	54736		PA5032NF150	54753							
34	2.130	2.085			1-3/8	2-1/4	PA5034DF150	54737		PA5034NF150	54754							
36	2.256	2.211			.3125		-	-		-	-	-	-	-	PA5036NF150	54755		
38	2.381	2.336					-	-		-	-	-	-	-	-	-	PA5038NF150	54756
40	2.506	2.461					-	-		-	-	-	-	-	-	-	PA5040NF150	54757
44	2.757	2.712					-	-		-	-	-	-	-	-	-	PA5044NF150	54758
48	3.008	2.963					-	-		1-1/2	13/32	1-3/16	-	-	-	-	PA5048NF150	54759
50	3.133	3.088					-	-		-	-	-	-	-	-	-	PA5050NF150	54760
56	3.509	3.464					.375			-	-	-	-	#10-32	-	-	PA5056NF150	54761
60	3.760	3.715	-	-					-	-	-	-	-		-	PA5060NF150	54762	
62	3.885	3.840	-	-	-	-			-	-	-	-	PA5062NF150		54763			
72	4.511	4.466	-	-	-	-			-	-	-	-	PA5072NF150		54764			

\*Pulleys with 12 and 13 grooves have one setscrew. All others have two at 90°  
†44-72 grooves, material is A356-T6 (cast).

# TIMING BELT PULLEYS

## 5MM PITCH LEXAN

## PL SERIES FOR 9MM WIDE BELTS



### STANDARD TOLERANCES

Dimension		Tolerances
Bore	All	+0.001 to -0.000

LEXAN – FIBERGLASS REINFORCED

### ORDER BY CATALOG NUMBER OR ITEM CODE

Number of Grooves	Pitch Dia.	O.D.	B	Face Width	C	D	L	Flange Dia.	Single Flange		Double Flange	
									Catalog Number	Item Code	Catalog Number	Item Code
11	.689	.644	3/16	7/16	11/16	3/4*	13/16	.87	PL5011SF090	54765	PL5011DF090	54782
12	.752	.707						.93	PL5012SF090	54766	PL5012DF090	54783
13	.815	.770						.99	PL5013SF090	54767	PL5013DF090	54784
14	.877	.832						1.06	PL5014SF090	54768	PL5014DF090	54785
15	.940	.895						1.19	PL5015SF090	54769	PL5015DF090	54786
16	1.003	.958						1.19	PL5016SF090	54770	PL5016DF090	54787
17	1.065	1.020						1.24	PL5017SF090	54771	PL5017DF090	54788
18	1.128	1.083						1.31	PL5018SF090	54772	PL5018DF090	54789
19	1.191	1.146						1.38	PL5019SF090	54773	PL5019DF090	54790
20	1.253	1.208						1.44	PL5020SF090	54774	PL5020DF090	54791
22	1.379	1.334	1.57	PL5022SF090	54775	PL5022DF090	54792					
25	1.566	1.521	1.76	PL5025SF090	54776	PL5025DF090	54793					
28	1.754	1.709	1.95	PL5028SF090	54777	PL5028DF090	54794					
29	1.817	1.772	2.02	PL5029SF090	54778	PL5029DF090	54795					
30	1.880	1.835	2.08	PL5030SF090	54779	PL5030DF090	54796					
40	2.506	2.461	2.71	PL5040SF090	54780	PL5040DF090	54797					
50	3.133	3.088	3.29	PL5050SF090	54781	PL5050DF090	54798					

\*7/8" for Double Flange.

# TIMING BELT PULLEYS

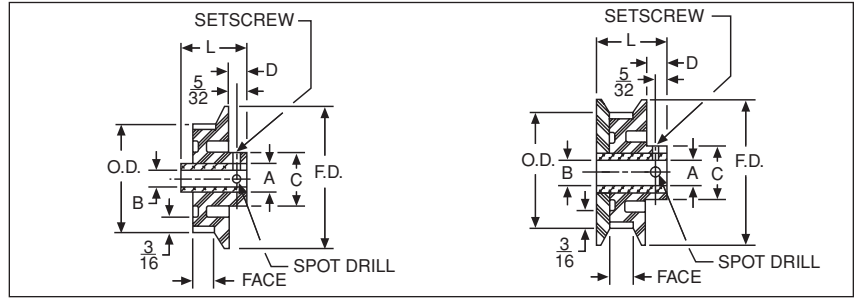
## 5MM PITCH LEXAN

## PLB SERIES FOR 9MM WIDE BELTS

LEXAN – FIBERGLASS REINFORCED  
KNURLED ALUMINUM INSERTS  
COMPLETE WITH SETSCREWS

### STANDARD TOLERANCES

Dimension		Tolerance
Bore	All	+0.001 to -0.000



### ORDER BY CATALOG NUMBER OR ITEM CODE

Number of Grooves	Pitch Dia.	O.D.	B	Face Width	C	D	Insert Dia.	L	Flange Dia.	Set-screw*	Single Flange		Double Flanges	
											Catalog Number	Item Code	Catalog Number	Item Code
11	.689	.644	3/16 1/4	11/16	3/8	3/8			.87	#6-32	PLB5011SF09-3/16	54799	PLB5011DF09-3/16	54846
12	.752	.707	3/16 1/4								PLB5011SF09-1/4	54800	PLB5011DF09-1/4	54847
13	.815	.770	3/16 1/4								PLB5012SF09-3/16	54801	PLB5012DF09-3/16	54848
14	.877	.832	3/16 1/4								PLB5012SF09-1/4	54802	PLB5012DF09-1/4	54849
15	.940	.895	1/4 5/16 3/8	3/4	1/4	13/16		1.19	#8-32	PLB5013SF09-3/16	54803	PLB5013DF09-3/16	54850	
16	1.003	.958	1/4 5/16 3/8							PLB5013SF09-1/4	54804	PLB5013DF09-1/4	54851	
17	1.065	1.020	1/4 5/16 3/8							PLB5014SF09-3/16	54805	PLB5014DF09-3/16	54852	
18	1.128	1.083	1/4 5/16 3/8							PLB5014SF09-1/4	54806	PLB5014DF09-1/4	54853	
19	1.191	1.146	1/4 5/16 3/8	7/16	1/2			1.19	#8-32	PLB5015SF09-1/4	54807	PLB5015DF09-1/4	54854	
20	1.253	1.208	1/4 5/16 3/8							PLB5015SF09-5/16	54808	PLB5015DF09-5/16	54855	
22	1.379	1.334	1/4 5/16 3/8							PLB5015SF09-3/8	54809	PLB5015DF09-3/8	54856	
25	1.566	1.521	1/4 5/16 3/8							PLB5016SF09-1/4	54810	PLB5016DF09-1/4	54857	
28	1.754	1.709	1/4 5/16 3/8	7/8				1.19	#8-32	PLB5016SF09-5/16	54811	PLB5016DF09-5/16	54858	
29	1.817	1.772	1/4 5/16 3/8							PLB5016SF09-3/8	54812	PLB5016DF09-3/8	54859	
30	1.880	1.835	1/4 5/16 3/8							PLB5017SF09-1/4	54813	PLB5017DF09-1/4	54860	
40	2.506	2.461	1/4 5/16 1/2							PLB5017SF09-5/16	54814	PLB5017DF09-5/16	54861	
50	3.133	3.088	5/16 3/8 1/2	5/16	5/8	13/16*		1.24	#10-32	PLB5017SF09-3/8	54815	PLB5017DF09-3/8	54862	
										PLB5018SF09-1/4	54816	PLB5018DF09-1/4	54863	
										PLB5018SF09-5/16	54817	PLB5018DF09-5/16	54864	
										PLB5018SF09-3/8	54818	PLB5018DF09-3/8	54865	
				5/16	5/8	13/16*		1.31	#10-32	PLB5019SF09-1/4	54819	PLB5019DF09-1/4	54866	
										PLB5019SF09-5/16	54820	PLB5019DF09-5/16	54867	
										PLB5019SF09-3/8	54821	PLB5019DF09-3/8	54868	
										PLB5020SF09-1/4	54822	PLB5020DF09-1/4	54869	
				5/16	5/8	13/16*		1.38	#10-32	PLB5020SF09-5/16	54823	PLB5020DF09-5/16	54870	
										PLB5020SF09-3/8	54824	PLB5020DF09-3/8	54871	
										PLB5022SF09-1/4	54825	PLB5022DF09-1/4	54872	
										PLB5022SF09-5/16	54826	PLB5022DF09-5/16	54873	
				5/16	5/8	13/16*		1.44	#10-32	PLB5022SF09-3/8	54827	PLB5022DF09-3/8	54874	
										PLB5025SF09-1/4	54828	PLB5025DF09-1/4	54875	
										PLB5025SF09-5/16	54829	PLB5025DF09-5/16	54876	
										PLB5025SF09-3/8	54830	PLB5025DF09-3/8	54877	
				5/16	5/8	13/16*		1.57	#10-32	PLB5028SF09-1/4	54831	PLB5028DF09-1/4	54878	
										PLB5028SF09-5/16	54832	PLB5028DF09-5/16	54879	
										PLB5028SF09-3/8	54833	PLB5028DF09-3/8	54880	
										PLB5029SF09-1/4	54834	PLB5029DF09-1/4	54881	
				5/16	5/8	13/16*		1.76	#10-32	PLB5029SF09-5/17	54835	PLB5029DF09-5/16	54882	
										PLB5029SF09-3/8	54836	PLB5029DF09-3/8	54883	
										PLB5030SF09-1/4	54837	PLB5030DF09-1/4	54884	
										PLB5030SF09-5/16	54838	PLB5030DF09-5/16	54885	
				5/16	5/8	13/16*		1.95	#10-32	PLB5030SF09-3/8	54839	PLB5030DF09-5/16	54886	
										PLB5040SF09-5/16	54840	PLB5040DF09-5/16	54887	
										PLB5040SF09-3/8	54841	PLB5040DF09-3/8	54888	
										PLB5040SF09-1/2	54842	PLB5040DF09-1/2	54889	
				5/16	5/8	13/16*		2.02	#10-32	PLB5050SF09-5/16	54843	PLB5050DF09-5/16	54890	
										PLB5050SF09-3/8	54844	PLB5050DF09-3/8	54891	
										PLB5050SF09-1/2	54845	PLB5050DF09-1/2	54892	

†7/8" for Double Flange  
\*No Flange