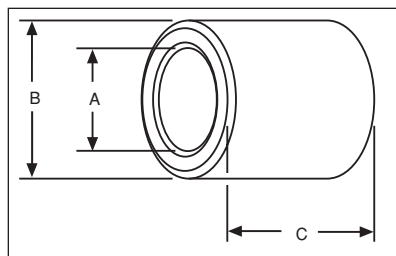


BOST-BRONZ OIL-IMPREGNATED SINTERED BRONZE BEARINGS

PLAIN CYLINDRICAL BEARINGS



STANDARD TOLERANCES

Dimensions		Tolerance
A	1/8 – 1 1/2	+ .000, – .001
	1 3/4 – 2 1/2	+ .000, – .0015
B	2 3/4 – 3 1/2	+ .000, – .002
C	1/8 – 1-1/2	± .005
	1 3/4 – 3	± .0075
	4	± .010

CONCENTRICITY

Dimensions		Tolerance
A	1/8 – 1 1/2	.003
	1 5/8 – 3	.004
	3 1/4 – 3 1/2	.005

Prices on unlisted sizes and other Boston Gear powder metal parts provided on request.

ALL DIMENSIONS IN INCHES
ORDER BY CATALOG NUMBER OR ITEM CODE

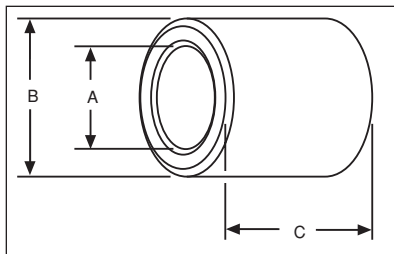
A	B	C	Catalog Number	Item Code	A	B	C	Catalog Number	Item Code
1/8 .127	1/4 .252	1/8	B24-1	34504	3/8 .377	9/16 .5645	3/8	B69-3	34648
		1/4	B24-2	34506			1/2	B69-4	34650
		3/8	B24-3	34508			5/8	B69-5	34652
		1/2	B24-4	34510			3/4	B69-6	34654
	1/8	B25-1	34512	7/8			B69-7	34656	
	1/4	B25-2	34514	1			B69-8	34658	
5/16 .315	1/4 .252	3/8	B25-3	34516		1-1/4	B69-10	34660	
		1/2	B25-4	34518		3/8	B610-3	34676	
		5/8	B25-5	34520		1/2	B610-4	34678	
		1/4	B34-2	34522		5/8	B610-5	34680	
		3/8	B34-3	34524		3/4	B610-6	34682	
		1/2	B34-4	34526		7/8	B610-7	34684	
3/16 .189	5/8 .625	5/8	B34-5	34528	1	B610-8	34686		
		3/4	B34-6	34530	1-1/4	B610-10	34688		
		1/4	B35-2	34532	3/8	B612-3	34690		
		3/8	B35-3	34534	1/2	B612-4	34692		
		1/2	B35-4	34536	3/4	B612-6	34694		
		5/8	B35-5	34538	1	B612-8	34696		
3/8 .377	3/4 .753	3/4	B35-6	34540	1-1/4	B612-10	34698		
		3/8	B36-3	13561	3/8	B79-3	34662		
		1/2	B36-4	13563	1/2	B79-4	34664		
		5/8	B36-5	13565	5/8	B79-5	34666		
		3/4	B36-6	13567	3/4	B79-6	34668		
		1/4	B45-2	13569	7/8	B79-7	34670		
5/16 .315	7/16 .439	3/8	B45-3	13571	1	B79-8	34672		
		1/2	B45-4	13573	1-1/4	B79-10	34674		
		3/4	B45-6	13575	3/8	B710-3	34700		
		1/4	B46-2	34542	1/2	B710-4	34702		
		5/16	B46-2 1/2	34544	5/8	B710-5	34704		
		3/8	B46-3	34546	3/4	B710-6	34706		
3/8 .377	5/8 .628	1/2	B46-4	34548	7/8	B710-7	34708		
		5/8	B46-5	34550	1	B710-8	34710		
		3/4	B46-6	34552	1-1/4	B710-10	34712		
		7/8	B46-7	34554	1/2	B711-4	34714		
		1	B46-8	34556	1	B711-8	34716		
		1-1/4	B46-10	34558	1-1/2	B711-12	34718		
1/4 .252	5/8 .628	3/8	B47-3	34560	1/2	B810-4	34720		
		1/2	B47-4	34562	5/8	B810-5	34722		
		5/8	B47-5	34564	3/4	B810-6	34724		
		3/4	B47-6	34566	7/8	B810-7	34726		
		7/8	B47-7	34568	1	B810-8	34728		
		1	B47-8	34570	1-1/8	B810-9	34730		
7/16 .439	11/16 .690	3/8	B48-3	34572	1-1/4	B810-10	34732		
		1/2	B48-4	34574	1-1/2	B810-12	34734		
		5/8	B48-5	34576	1/2	B811-4	34736		
		3/4	B48-6	34578	5/8	B811-5	34738		
		7/8	B48-7	34580	3/4	B811-6	34740		
		1	B48-8	34582	7/8	B811-7	34742		
1/2 .502	11/16 .690	1-1/4	B48-10	34584	1	B811-8	34744		
		3/8	B56-3	34586	1-1/8	B811-9	34746		
		1/2	B56-4	34588	1-1/4	B811-10	34748		
		5/8	B56-5	34590	1-1/2	B811-12	34750		
		3/4	B56-6	34592	1/2	B812-4	34752		
		7/8	B56-7	34594	5/8	B812-5	34754		
5/16 .314	7/16 .439	1	B56-8	34596	3/4	B812-6	34756		
		1/4	B57-2	34598	7/8	B812-7	34758		
		3/8	B57-3	34600	1	B812-8	34760		
		1/2	B57-4	34602	1-1/8	B812-9	34762		
		5/8	B57-5	34604	1-1/4	B812-10	34764		
		3/4	B57-6	34606	1-1/2	B812-12	34766		
7/16 .439	13/16 .815	7/8	B57-7	34608	1-3/4	B812-14	34768		
		1	B57-8	34610	2	B812-16	34770		
		1-1/4	B57-10	34612	1/2	B813-4	34772		
		1-3/8	B57-11	34614	3/4	B813-6	34774		
		3/8	B58-3	34616	1	B813-8	34776		
		1/2	B58-4	34618	1-1/2	B813-12	34778		
1/2 .502	7/8 .878	5/8	B58-5	34620	1/2	B814-4	34780		
		3/4	B58-6	34622	5/8	B814-5	34782		
		7/8	B58-7	34624	3/4	B814-6	34784		
		1	B58-8	34626	7/8	B814-7	34786		
		1-1/4	B58-10	34628	1	B814-8	34788		
		1-1/2	B58-12	34630	1-1/4	B814-10	34790		
3/8 .377	11/16 .690	1-3/4	B58-14	34632	1-1/2	B814-12	34792		
		1/2	B67-4	13577	3/4	B816-6	13585		
		5/8	B67-5	13579	1	B816-8	13587		
		3/4	B67-6	13581	1-1/2	B816-12	13589		
		1	B67-8	13583	2	B816-16	13591		
		3/8	B68-3	34634	1/2	B911-4	34794		
1/2 .502	9/16 .565	1/2	B68-4	34636	3/4	B911-6	34796		
		5/8	B68-5	34638	1	B911-8	34798		
		3/4	B68-6	34640	1-1/2	B911-12	34800		
		7/8	B68-7	34642					
		1	B68-8	34644					
		1-1/4	B68-10	34646					

On A and B dimensions, tolerances apply to actual (decimal) dimensions.

BOST-BRONZ OIL-IMPREGNATED SINTERED BRONZE BEARINGS

PLAIN CYLINDRICAL BEARINGS

ALL DIMENSIONS IN INCHES
ORDER BY CATALOG NUMBER OR ITEM CODE



STANDARD TOLERANCES

Dimensions	Tolerance	
A	1/8 - 1 1/2 1 3/4 - 2 1/2	+ .000, - .001 + .000, - .0015
B	2 3/4 - 3 1/2	+ .000, - .002
C	1/8 - 1 1/2 1 3/4 - 3 4	± .005 ± .0075 ± .010

CONCENTRICITY

Dimensions	Tolerance	
A	1/8 - 1 1/2 1 5/8 - 3 3 1/4 - 3 1/2	.003 .004 .005

Prices on unlisted sizes and other Boston Gear powder metal parts provided on request.

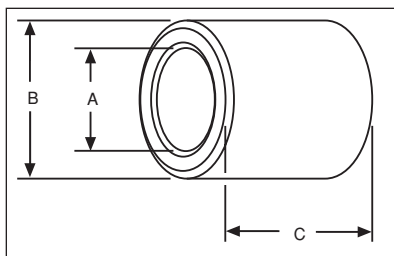
A	B	C	Catalog Number	Item Code	A	B	C	Catalog Number	Item Code	
9/16 .565	3/4 .753	1/2	B912-4	34802	3/4 .753	1-1/8 1.128	1/2	B1218-4	34952	
		3/4	B912-6	34804			3/4	B1218-6	34954	
		1	B912-8	34806			1	B1218-8	34956	
		1-1/2	B912-12	34808			1-1/4	B1218-10	34958	
	13/16 .815	1/2	B913-4	34810			1-1/2	B1218-12	34960	
		3/4	B913-6	34812			1-3/4	B1218-14	34962	
5/8 .627	3/4 .753	1	B913-8	34814	13/16 .8155	1 1.003	2	B1218-16	34964	
		1-1/4	B913-10	34816			3/4	B1220-6	34966	
		1-1/2	B913-12	34818			1	B1220-8	34968	
		1/2	B1012-4	34820			1-1/4	B1220-10	34970	
		5/8	B1012-5	34822			1-1/2	B1220-12	34972	
		3/4	B1012-6	34824			1-3/4	B1220-14	34974	
	5/8 .627	13/16 .815	7/8	B1012-7	34826	7/8 .878	1-1/8 1.128	2	B1220-16	34976
			1	B1012-8	34828			3/4	B1316-6	34978
			1-1/8	B1012-9	34830			1	B1316-8	34980
			1-1/4	B1012-10	34834			1-1/4	B1316-10	34982
			1-1/2	B1012-12	34832			1-1/2	B1316-12	34984
			1/2	B1013-4	34836			1-3/4	B1316-14	34986
5/8 .628	1 1.003	5/8	B1013-5	34838	15/16 .9405	1-3/16 1.1905	2	B1316-16	34988	
		3/4	B1013-6	34840			3/4	B1416-6	34990	
		7/8	B1013-7	35400			7/8	B1416-7	34992	
		1	B1013-8	34842			1	B1416-8	34994	
		1-1/4	B1013-10	34844			1-1/4	B1416-10	34996	
		1-1/2	B1013-12	34846			1-1/2	B1416-12	34998	
	11/16 .690	7/8 .878	2	B1013-16	34848	3/4 .753	1 1.004	1-1/4	B1416-14	34998
			5/8	B1014-5	34850			3/4	B1418-6	35000
			3/4	B1014-6	34852			7/8	B1418-7	35002
			7/8	B1014-7	34854			1	B1418-8	35004
			1	B1014-8	34856			1-1/8	B1418-9	35006
			1-1/4	B1014-10	34858			1-1/4	B1418-10	35008
5/8 .628	1 1.003	1-1/2	B1014-12	34860	7/8 .878	1-1/8 1.128	1-3/8	B1418-11	35010	
		1-3/4	B1014-14	34862			1-1/2	B1418-12	35012	
		2	B1014-16	34864			1-3/4	B1418-14	35014	
		1/2	B1016-4	34866			2	B1418-16	35016	
		5/8	B1016-5	34868			2-1/2	B1418-20	35018	
		3/4	B1016-6	34870			3/4	B1420-6	35020	
	11/16 .690	7/8 .878	7/8	B1016-7	34872	15/16 .9405	1-1/4 1.253	1	B1420-8	35022
			1	B1016-8	34874			1-1/4	B1420-10	35024
			1-1/4	B1016-10	34876			1-1/2	B1420-12	35026
			1-1/2	B1016-12	34878			2	B1420-16	35028
			1-3/4	B1016-14	34880			3/4	B1519-6	35030
			2	B1016-16	34882			1	B1519-8	35032
3/4 .753	7/8 .878	1	B1114-8	34886	15/16 .9405	1-1/4 1.253	1-1/4	B1519-10	35034	
		1-1/4	B1114-10	34888			1-1/2	B1519-12	35036	
		1-1/2	B1114-12	34890			2	B1519-16	35038	
		1-3/4	B1114-14	34892			3/4	B1520-6	35040	
		2	B1114-16	34894			1	B1520-8	35042	
		1/2	B1214-4	34896			1-1/4	B1520-10	35044	
	3/4 .753	7/8 .878	5/8	B1214-5	34898	15/16 .9405	1-1/4 1.253	1-1/2	B1520-12	35046
			3/4	B1214-6	34900			1-3/4	B1520-14	35048
			7/8	B1214-7	34902			2	B1520-16	35050
			1	B1214-8	34904			3/4	B1618-6	35052
			1-1/4	B1214-10	34906			1	B1618-8	35054
			1-1/2	B1214-12	34908			1-1/4	B1618-10	35056
15/16 .9405		7/8 .878	1-5/8	B1214-13	34910	15/16 .9405	1-1/8 1.128	1-1/2	B1618-12	35058
			1/2	B1215-4	34912			1-3/4	B1618-14	35060
			5/8	B1215-5	34914			2	B1618-16	35062
			3/4	B1215-6	34916			3/4	B1619-6	13593
			7/8	B1215-7	34918			1	B1619-8	13595
			1	B1215-8	34920			1-1/4	B1619-10	13597
3/4 .753	7/8 .878	1-1/4	B1215-10	34922	15/16 .9405	1-1/8 1.128	1-1/2	B1619-12	13599	
		1-1/2	B1215-12	34924			1-3/4	B1619-14	13601	
		1-3/4	B1215-14	34926			2	B1619-16	13603	
		2	B1215-16	34928			3/4	B1620-6	35064	
		1/2	B1216-4	34930			7/8	B1620-7	35066	
		5/8	B1216-5	34932			1	B1620-8	35068	
	1 1.003	1 1.003	3/4	B1216-6	34934	3/4 .753	1 1.004	1-1/4	B1620-10	35070
			7/8	B1216-7	34936			1-3/8	B1620-11	35072
			1	B1216-8	34938			1-1/2	B1620-12	35074
			1-1/8	B1216-9	34940			1-3/4	B1620-14	35076
			1-1/4	B1216-10	34942			2	B1620-16	35078
			1-1/2	B1216-12	34944			2-1/4	B1620-18	35080
1 1.003	1 1.003	1-3/4	B1216-14	34946	15/16 1.3155	1-5/16 1.3155	2-1/2	B1620-20	35082	
		2	B1216-16	34948			3	B1620-24	35084	
		2-1/2	B1216-20	34950			1	B1621-8	35086	
		1/2	B1216-4	34930			1-1/4	B1621-10	35088	
		5/8	B1216-5	34932			1-1/2	B1621-12	35090	
		3/4	B1216-6	34934			1-3/4	B1621-14	35092	
1 1.003	1 1.003	7/8	B1216-7	34936	15/16 1.3155	1-5/16 1.3155	2	B1621-16	35094	
		1	B1216-8	34938			2-1/2	B1621-20	35096	
		1-1/8	B1216-9	34940			3	B1621-24	35098	
		1-1/4	B1216-10	34942						
		1-1/2	B1216-12	34944						
		1-3/4	B1216-14	34946						

On A and B dimensions, tolerances apply to actual (decimal) dimensions.

BOST-BRONZ OIL-IMPREGNATED SINTERED BRONZE BEARINGS

PLAIN CYLINDRICAL BEARINGS

ALL DIMENSIONS IN INCHES
ORDER BY CATALOG NUMBER OR ITEM CODE



STANDARD TOLERANCES

Dimensions	Tolerance
A	1/8 - 1 1/2 1 3/4 - 2 1/2 + .000, - .0015
B	2 3/4 - 3 1/2 + .000, - .002
C	1/8 - 1 1/2 1 3/4 - 3 4 ± .005 ± .0075 ± .010

CONCENTRICITY

Dimensions	Tolerance
A	1/8 - 1 1/2 1 5/8 - 3 3 1/4 - 3 1/2 .003 .004 .005

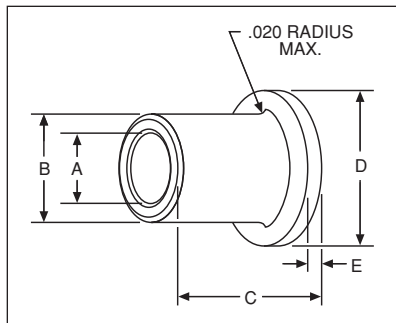
Prices on unlisted sizes and other Boston Gear powder metal parts provided on request.

A	B	C	Catalog Number	Item Code	A	B	C	Catalog Number	Item Code
1 1.003	1-3/8 1.378	1	B1622-8	35100	1-7/16 1.4405	1-3/4 1.753	1	B2328-8	35252
		1-1/4	B1622-10	35102			1-1/4	B2328-10	35254
		1-1/2	B1622-12	35104			1-1/2	B2328-12	35256
	1-3/4	B1622-14	35106	1-3/4			B2328-14	35258	
	2	B1622-16	35108	2			B2328-16	35260	
	2-1/2	B1622-20	35110	2-1/2			B2328-20	35262	
1-1/16 1.0655	1-1/2 1.503	3	B1622-24	35112	1-13/16 1.816	1-3/4 1.753	3	B2328-24	35264
		1	B1624-8	35114			1	B2428-8	35266
		1-1/4	B1624-10	35116			1-1/4	B2428-10	35268
	1-1/2	B1624-12	35118	1-1/2			B2428-12	35270	
	2	B1624-16	35120	2			B2428-16	35272	
	2-1/2	B1624-20	35122	2-1/2			B2428-20	35274	
1-1/8 1.129	1-1/4 1.254	3	B1624-24	35124	1-5/8 1.628	1-7/8 1.878	3	B2428-24	35276
		1	B1721-8	35126			1-1/2	B2430-12	35282
		1-1/2	B1721-12	35128			2	B2430-16	35284
	2	B1721-16	35130	2-1/2			B2430-20	35286	
	2-1/2	B1721-20	35132	3			B2430-24	35288	
	1-1/8 1.129	1-1/2 1.503	1	B1820-8			13605	1-11/16 1.6905	2-3/16 2.191
1-1/4			B1820-10	13639	1-1/2	B2432-12	35292		
1-1/2			B1820-12	13641	2	B2432-16	35294		
1		B1821-8	35134	2-1/2	B2432-20	35296			
1-1/4		B1821-10	35136	3	B2432-24	35298			
1-1/2		B1821-12	35138	1	B2630-10	35300			
1-3/16 1.1905	1-3/8 1.378	2	B1821-16	35140	1-15/16 1.9405	2-5/16 2.316	2	B2630-12	35302
		3/4	B1822-6	35142			2	B2630-16	35304
		1	B1822-8	35144			2-1/2	B2630-20	35306
	1-1/4	B1822-10	35146	3			B2630-24	35308	
	1-1/2	B1822-12	35148	1			B2632-8	35310	
	1-3/4	B1822-14	35150	2			B2632-16	35312	
1-1/4 1.254	1-1/2 1.503	2	B1822-16	35152	2 2.003	2-3/8 2.379	3	B2632-24	35314
		2-1/2	B1822-20	35154			1-3/4	B2735-14	35316
		3	B1822-24	35156			2	B2735-16	35318
	1	B1824-8	35158	3			B2735-24	35320	
	1-1/2	B1824-12	35160	4			B2735-32	35322	
	2	B1824-16	35162	2			B2832-16	35324	
1-1/8 1.129	1-1/2 1.503	2	B1923-10	35164	2 2.003	2-1/2 2.504	2	B2832-20	35326
		2	B1923-16	35166			3	B2832-24	35328
		2-1/2	B1923-20	35168			1-1/2	B2834-12	35330
	3	B1923-24	35170	2			B2834-16	35332	
	1	B1924-8	35172	3			B2834-24	35334	
	1-1/4	B1924-10	35174	2			B3137-16	35336	
1-1/4 1.254	1-5/8 1.628	1-1/2	B1924-12	35176	2-1/4 2.254	2-3/4 2.754	3	B3137-24	35338
		1-3/4	B1924-14	35178			4	B3137-32	35340
		2	B1924-16	35180			1-3/4	B3238-14	35342
	2-1/2	B1924-20	35182	2			B3238-16	35344	
	3	B1924-24	35184	2-3/4			B3238-22	35346	
	1	B2024-8	35186	3			B3238-24	35348	
1-1/8 1.129	1-1/2 1.503	1-1/8	B2024-9	35188	2-3/8 2.379	2-3/4 2.754	4	B3238-32	35350
		1-1/4	B2024-10	35190			1	B3240-8	35352
		1-3/8	B2024-11	35192			2	B3240-16	35354
	1-1/2	B2024-12	35194	3			B3240-24	35356	
	1-5/8	B2024-13	35196	2			B3644-16	35364	
	1-3/4	B2024-14	35198	3			B3644-24	35366	
1-5/16 1.3155	1-5/8 1.628	2	B2024-16	35200	2-1/2 2.504	3 3.005	4	B3644-32	35368
		2-1/4	B2024-18	35202			2	B3844-16	35370
		2-1/2	B2024-20	35204			3	B3844-24	35372
	3	B2024-24	35206	4			B3844-32	35374	
	1	B2026-8	35208	2			B4048-16	35382	
	1-1/4	B2026-10	35210	3			B4048-24	35384	
1-1/4 1.254	1-1/2 1.503	1-1/2	B2026-12	35212	2-3/4 2.755	3-1/4 3.255	4	B4048-32	35386
		1-3/4	B2026-14	35214			2	B4452-16	35388
		2	B2026-16	35216			3	B4452-24	35390
	2-1/2	B2026-20	35218	4			B4452-32	35392	
	3	B2026-24	35220	2			B4856-16	35394	
	1	B2126-10	35222	3			B4856-24	35396	
1-3/8 1.378	1-5/8 1.628	1-1/2	B2126-12	35224	3 3.004	3-1/2 3.505	4	B4856-32	35398
		2	B2126-16	35226			1	B2226-8	35232
		2-1/2	B2126-20	35228			2	B2226-12	35234
	3	B2126-24	35230	3			B2226-16	35236	
	1	B2226-8	35232	4			B2226-20	35238	
	1-1/2	B2226-12	35234	1			B2226-24	35240	
1-3/8 1.378	1-3/4 1.753	2	B2226-16	35236	1-5/16 1.3155	1-5/8 1.628	3	B2226-20	35238
		2-1/2	B2226-20	35238			1	B2228-8	35242
		3	B2226-24	35240			1-1/2	B2228-12	35244
	1	B2228-8	35242	2			B2228-16	35246	
	1-1/2	B2228-12	35244	2-1/2			B2228-20	35248	
	2	B2228-16	35246	3			B2228-24	35250	

On A and B dimensions, tolerances apply to actual (decimal) dimensions.

BOST-BRONZ OIL-IMPREGNATED SINTERED BRONZE BEARINGS

FLANGED TYPE



ALL DIMENSIONS IN INCHES
ORDER BY CATALOG NUMBER OR ITEM CODE

A	B	C	D	E	Catalog Number	Item Code			
1/8 .127	5/16 .315	1/4 3/8	.375	3/64	FB25-2 FB25-3	35516 35518			
3/16 .189	5/16 .3145	1/8 1/4 3/8	.375	3/64	FB35-1 FB35-2 FB35-3	35520 35522 35524			
1/4 .252	3/8 .377	1/4 3/8 1/2 5/8 3/4	.500	3/64	FB46-2 FB46-3 FB46-4 FB46-5 FB46-6	35526 35528 35530 35532 35534			
1/4 .252	1/2 .503	3/4	.625	1/16	FB48-6	13609			
5/16 .314	3/8 .377	3/8	.500	3/64	FB56-3	35536			
	7/16 .439	3/8 1/2	.625	3/32	FB57-3	35538			
		5/8			FB57-4	69191			
3/4		FB57-5			69192				
7/8		FB57-6			35540				
1	FB57-7	69193							
1	FB57-8	69194							
1/2 .502	3/8 1/2 5/8	.688	3/32	FB58-3 FB58-4 FB58-5	35542 35544 35546				
3/8 .377	1/2 .502	3/8	.688	3/32	FB68-3	35548			
		13/32			FB68-3 1/4	35550			
		1/2			FB68-4	35552			
		5/8			FB68-5	35554			
		3/4			FB68-6	35556			
		7/8			FB68-7	69195			
		1			FB68-8	35558			
		1-1/4			FB68-10	35560			
		1/2			FB69-4	69196			
		3/4			FB69-6	35562			
1-1/4	FB69-10	35564							
5/8 .627	5/8 3/4 1 1-1/4	.875	1/8	FB610-3	69197				
				FB610-4	35566				
				FB610-5	39198				
				FB610-6	35568				
				FB610-8	69199				
FB610-10	35570								
3/4 .753	1/2	1.000	1/8	FB612-4	35572				
7/16 .439	9/16 .565	1/2	.688	1/16	FB79-4	13611			
		5/8			FB79-5	13613			
		3/4			FB79-6	13615			
5/8 .628	5/8 3/4 1-1/4	.875	1/8	FB710-5	35574				
				FB710-6	69200				
				FB710-10	35576				
1/2 .502	5/8 .628	1/2	.875	1/8	FB810-4	35578			
		5/8			FB810-5	35580			
		3/4			FB810-6	35582			
		7/8			FB810-7	69201			
		1			FB810-8	35584			
		1-1/4			FB810-10	35586			
		1-1/2			FB810-12	35588			
		1-3/4			FB810-14	35590			
		11/16 .690			1/2 5/8 3/4	.938	1/8	FB811-4	35592
								FB811-5	69202
								FB811-6	35594
		3/4 .753			1/2 5/8 3/4 7/8 1 1-1/4 1-1/2	1.000	1/8	FB812-4	35596
FB812-5	69203								
FB812-6	35598								
FB812-7	35600								
FB812-8	35602								
FB812-10	35604								
FB812-12	35606								
9/16 .565	3/4 3/4 1		1.000	1/8				FB912-4	69204
								FB912-6	69205
								FB912-8	35608

STANDARD TOLERANCES

Dimensions	Tolerance
A 1/8 - 1 1/2 1 3/4 - 2 1/2	+ .000, - .001 + .000, - .0015
B 2 3/4 - 3 1/2	+ .000, - .002
C 1/8 - 1 1/2 1 3/4 - 3 4	± .005 ± .0075 ± .010
D 3/8 - 1 1/4 1 3/8 - 2 1/2 4	± .005 ± .010 ± .015
E 3/8 - 1 1/4 1 3/8 - 2 1/2 4	± .0025 ± .005 ± .010

CONCENTRICITY

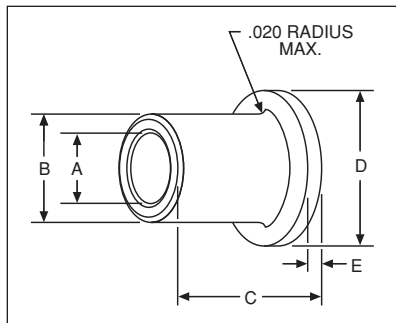
Dimensions	Tolerance
A 1/8 - 1 1/2 1 5/8 - 3 3 1/4 - 3 1/2	.003 .004 .005

Prices on unlisted sizes and other Boston Gear powder metal parts provided on request.

On A and B dimensions, tolerances apply to actual (decimal) dimensions.

BOST-BRONZ OIL-IMPREGNATED SINTERED BRONZE BEARINGS

FLANGED TYPE



STANDARD TOLERANCES

Dimensions	Tolerance	
A	1/8 - 1 1/2 1 3/4 - 2 1/2	+ .000, - .001 + .000, - .0015
B	2 3/4 - 3 1/2	+ .000, - .002
C	1/8 - 1 1/2 1 3/4 - 3 4	± .005 ± .0075 ± .010
D	3/8 - 1 1/4 1 3/8 - 2 1/2 4	± .005 ± .010 ± .015
E	3/8 - 1 1/4 1 3/8 - 2 1/2 4	± .0025 ± .005 ± .010

CONCENTRICITY

Dimensions	Tolerance	
A	1/8 - 1 1/2 1 5/8 - 3 3 1/4 - 3 1/2	.003 .004 .005

Prices on unlisted sizes and other Boston Gear powder metal parts provided on request.

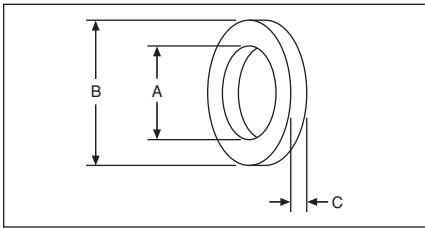
ALL DIMENSIONS IN INCHES
ORDER BY CATALOG NUMBER OR ITEM CODE

A	B	C	D	E	Catalog Number	Item Code	
5/8 .626	3/4 .753	1/2	1.000	1/8	FB1012-4	35610	
		5/8			FB1012-5	35612	
		3/4			FB1012-6	35614	
		1			FB1012-8	35616	
		1-1/4			FB1012-10	35618	
5/8 .627	13/16 .815	5/8	1.063	5/32	FB1013-5	69206	
		3/4			FB1013-6	35620	
		1			FB1013-8	35622	
		1-1/4			FB1013-10	35624	
		1-7/16			FB1013-11 1/2	35626	
		1-1/2			FB1013-12	35628	
	2	FB1013-16	35630				
	7/8 .878	1 1.003	5/8	1.125	5/32	FB1014-5	69207
			3/4			FB1014-6	35632
			1			FB1014-8	35634
1-3/4			FB1014-14			35636	
3/4 .752	7/8 .878	3/4	1.125	5/32	FB1214-6	35644	
		1			FB1214-8	35646	
		1-1/4			FB1214-10	69209	
	15/16 .940	1	1.188	5/32	FB1215-8	35648	
		1-1/4			FB1215-10	69213	
		1-1/2			FB1215-12	35650	
	1 1.003	1 1.003	5/8	1.250	5/32	FB1216-5	69214
			3/4			FB1216-6	35652
			1			FB1216-8	35654
			1-1/4			FB1216-10	35656
1-1/2			FB1216-12			35658	
2			FB1216-16			35660	
7/8 .877	1 1.003	3/4	1.250	5/32	FB1416-6	35662	
		1			FB1416-8	69210	
		1-1/4			FB1416-10	35664	
1-1/8 1.128	1 1.128	1	1.375	5/32	FB1418-8	35666	
		1-1/4			FB1418-10	69211	
		1-1/2			FB1418-12	35668	
1 1.002	1-1/4 1.253	3/4	1.500	3/16	FB1620-6	35672	
		1			FB1620-8	35674	
		1-1/4			FB1620-10	35676	
	1-3/8 1.378	1 1.002	1-1/2	1.625	3/16	FB1620-12	35678
			2			FB1620-16	35680
			1			FB1622-8	35682
1-1/8 1.127	1-3/8 1.377	3/4	1.750	1/8	FB1822-6	13617	
		1			FB1822-8	13619	
		1-1/4			FB1822-10	13621	
1-1/4 1.252	1-1/2 1.503	1	1.750	3/16	FB2024-8	69216	
		1-1/4			FB2024-10	35686	
		1-1/2			FB2024-12	69217	
1-3/8 1.377	1-5/8 1.628	3/4	2.000	1/8	FB2226-6	13623	
		1			FB2226-8	13625	
1-1/2 1.503	1-3/4 1.754	1-1/2	2.063	3/16	FB2428-12	35688	
		2			FB3236-6	13627	
2 2.003	2-1/4 2.254	3/4	2.500	1/8	FB3236-8	13629	
		1			FB3236-10	13631	
		1-1/4			FB4452-12	13635	
2-3/4 2.752	3-1/4 3.255	1-1/2	4.000	3/16	FB4452-12	13635	
		3			FB4856-19	13637	
3 3.002	3-1/2 3.502	2-3/8	4.000	3/8	FB4856-19	13637	

On A and B dimensions, tolerances apply to actual (decimal) dimensions.

BOST-BRONZ OIL-IMPREGNATED SINTERED BRONZE BEARINGS

THRUST TYPE



STANDARD TOLERANCES

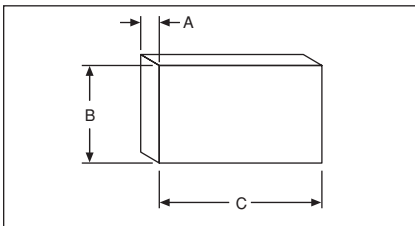
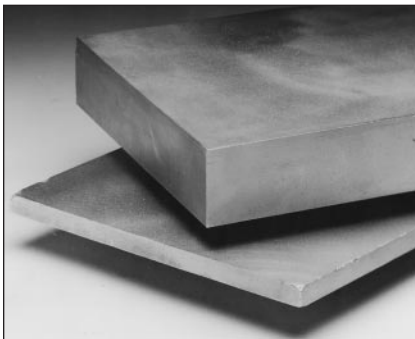
Dimensions		Tolerance
A	1/4 – 1 1/4	±.010
	1 3/8 – 2 1/2	±.015
B	7/16 – 1 1/2	±.010
	1 9/16 – 3	±.015
	3 1/4 – 4	±.020
C	All	± .0025

ALL DIMENSIONS IN INCHES ORDER BY CATALOG NUMBER OR ITEM CODE

A	B	C	Catalog Number	Item Code	A	B	C	Catalog Number	Item Code
1/4 .255	7/16 .4375	1/16	TB47	13515	3/4 .765	1-9/16 1.562	3/32	TB1225	35784
	1/2 .500	1/16	TB48	13517		1-3/4 1.750	1/8	TB1228	35786
	5/8 .625	1/16	TB410	35766	7/8 .8905	1-1/2 1.500	1/8	TB1424	35788
5/16 .315	5/8 .625	1/16	TB510	13519	7/8 .880	2 2.000	1/8	TB1432	13525
	3/4 .750	1/16	TB512	35768	7/8 .8905	2-1/8 2.125	1/8	TB1434	35790
3/8 .385	5/8 .625	1/16	TB610	13521	1	1-1/2 1.504	1/8	TB1624	35792
3/8 .380	3/4 .750	1/32	TB612	35770	1.003	1-1/2 1.500	3/16	TB1624-3	13527
	3/4 .750	1/8	TB612-2	13523	1	1-5/8 1.625	1/4	TB1626-4	13529
7/16 .440	3/4 .750	1/16	TB712	69218	1	1-3/4 1.750	1/8	TB1628	13531
1/2 .505	3/4 .750	1/16	TB812	35772	1	2 2.000	1/8	TB1632	35794
1/2 .505	7/8 .875	3/16	TB814	35774	1	2-7/8 2.875	1/8	TB1646	13533
1/2 .510	1 1.000	1/16	TB816	35776	1-1/8 1.140	1-7/8 1.875	1/8	TB1830	13535
9/16 .565	1-1/4 1.250	1/8	TB920	35778	1-1/4 1.253	1-3/4 1.750	1/8	TB2028	35796
5/8 .628	1 1.000	1/8	TB1016	35780	1-1/4	2 2.000	1/8	TB2032	13537
	1-3/16 1.187	3/32	TB1019	35782	1.265	2-3/8 2.375	1/8	TB2038	13539
	1-1/4 1.250	1/8	TB1020	69219	1-1/9 1.255	3-5/16 3.312	1/8	TB2053	13541
5/8 .6265	1-1/2 1.500	1/8	TB1024	69220	1-3/8 1.379	1-15/16 1.940	1/8	TB2231	13543
3/4 .753	1-1/4 1.250	1/8	TB1220	69221	1-1/2 1.503	2 2.000	1/8	TB2432	13545
	1-3/8 1.375	1/8	TB1222	69222	1-1/2 1.505	2-1/2 2.505	1/8	TB2440	13547
1-1/2 1.510	3-1/2 3.500	3/16	TB2456	35798	1-9/16 1.578	2-7/16 2.4375	1/8	TB2539	13549
1-3/4 1.765	2-5/8 2.625	1/8	TB2842	13551	2 2.011	3 3.000	1/4	TB3248	13553
2 2.031	3-5/8 2.625	3/16	TB3258	13555	2-1/16 2.062	4 4.000	1/8	TB3364	13557
2-1/2 2.502	3-1/4 3.250	1/8	TB4052	13559	1-1/2 1.510	3-1/2 3.500	3/16	TB2456	35798

On A and B dimensions, tolerances apply to actual (decimal) dimensions.

PLATE STOCK



STANDARD TOLERANCES

Dimensions	Tolerance
A	All
	±.010 to -.005

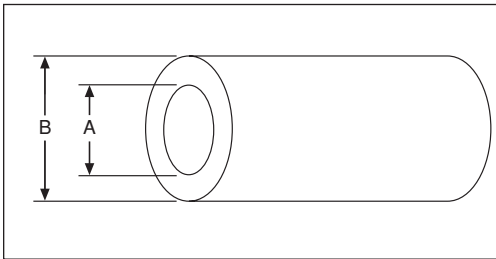
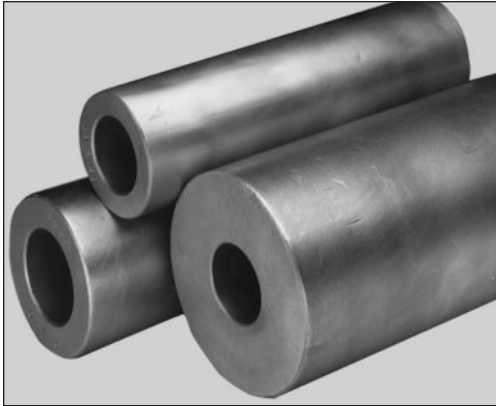
ALL DIMENSIONS IN INCHES ORDER BY CATALOG NUMBER OR ITEM CODE

A	B	C	Catalog Number	Item Code
1/8	5	6	PB5602	35692
3/16			PB5603	35694
1/4			PB5604	35696
5/16			PB5605	35698
3/8	5	6	PB5606	35700
1/2			PB5608	35702
5/8			PB5610	35704
3/4			PB5612	35706
1			PB5616	35708
3/16	5	8	PB5803	35710
1/4			PB5804	35712

Keep **BOST-BRONZ** plate stock on hand for: Breakdowns – maintenance and repairs – Producing small lots of special sizes – Experimental and development work.

BOST-BRONZ OIL-IMPREGNATED SINTERED BRONZE BEARINGS

CORED BARS



STANDARD TOLERANCES

Dimensions	Tolerance
A All	-1/8"
B All	+1/8"

BOST-BRONZ is stocked in these convenient Bar forms for ease in machining to required bearing size or shape — at your service for all emergencies.

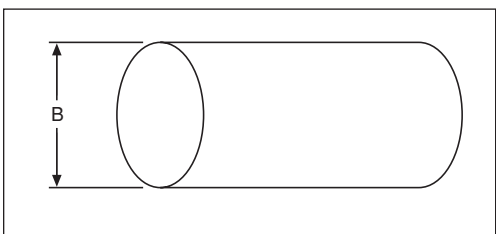
ALL DIMENSIONS IN INCHES ORDER BY CATALOG NUMBER OR ITEM CODE

A	B	Catalog Number	Item Code
1/2	1	CB816	35402
	1-1/4	CB820	35404
	1-1/2	CB824	35406
5/8	1	CB1016	35408
	1-1/4	CB1020	35410
	1-3/8	CB1022	35412
	1-1/2	CB1024	35414
3/4	1-3/4	CB1028	35416
	2	CB1220	35418
	2-1/2	CB1224	35420
	3	CB1228	35422
7/8	2	CB1232	35424
	2-1/2	CB1240	35426
	3	CB1422	35428
	1	1-1/2	CB1624
1	1-3/4	CB1628	35432
	2	CB1632	35434
	2-1/4	CB1636	35436
	2-1/2	CB1640	35438
	3	CB1648	35440
	1-1/4	1-3/4	CB2028
2		CB2032	35444
2-1/4		CB2036	35446
2-1/2		CB2040	35448
1-3/8	3	CB2048	35450
	2	CB2232	35452
	1-1/2	2	CB2432
2-1/4		CB2436	35458
2-1/2		CB2440	35460
3		CB2448	35462
	3-1/2	CB2456	35464

A	B	Catalog Number	Item Code
1-3/4	2-1/4	CB2836	35466
	2-1/2	CB2840	35468
	2-3/4	CB2844	35470
	3	CB2848	35472
2	3-1/2	CB2856	35474
	2-3/4	CB3244	35476
	3	CB3248	35478
	3-1/4	CB3252	35480
	4	CB3264	35482
2-1/4	4-1/2	CB3272	35484
	5	CB3280	35486
	3	CB3648	35488
2-3/8	3-1/2	CB3656	35490
	3-3/4	CB3660	35492
2-1/2	3	CB3848	35494
3	3-1/2	CB4056	35496
	3-3/4	CB4860	35498
	4	CB4864	35500
	5	CB4880	35502
	6	CB4896	35504
	3-1/2	4-3/4	CB5676
4	6	CB6496	35512
5	7	CB80112	35514

All bars are 6 1/2" long.

SOLID BARS



STANDARD TOLERANCES

Dimensions	Tolerance
B All	+ 1/8"

ALL DIMENSIONS IN INCHES ORDER BY CATALOG NUMBER OR ITEM CODE

B	Length	Catalog Number	Item Code
1/4	2	SB4	35714
3/8	3	SB6	35716
1/2	6-1/2	SB8	35718
5/8		SB10	35720
3/4		SB12	35722
7/8		SB14	35724
1	6-1/2	SB16	35726
1-1/8		SB18	35728
1-1/4		SB20	35730
1-3/8		SB22	35732
1-1/2	6-1/2	SB24	35734
1-5/8		SB26	35736
1-3/4		SB28	35738
2	6-1/2	SB32	35742
2-1/4		SB36	35744
2-1/2		SB40	35746
3		SB48	35748
3-1/2	6-1/2	SB56	35750
4		SB64	35752
4-1/2		SB72	35754
5		SB80	35756
5-1/2	6-1/2	SB88	35758
6		SB96	35760
7		SB112	35762
8		SB128	35764

BEAR-N-BRONZ 660 CAST BRONZE BEARINGS



BEAR-N-BRONZ is Boston Gear's general purpose cast, solid bronze bearing material. It is a high grade, leaded-tin bronze, having good hardness, strength, wear-resistance, and exceptional anti-friction qualities. It is particularly suited for moderate to heavy loads at normal to relatively high speeds.

QUALITY

BEAR-N-BRONZ is chemically and metallurgically tested to assure conformance to specifications. All parts are rigidly inspected to assure freedom from porosity and conformance to dimensional tolerances.

ADAPTABILITY

BEAR-N-BRONZ bearings are completely machined to close tolerances permitting wider housing-bore tolerances. BEAR-N-BRONZ bars are machined all over.

Composition (%)	Avg. Tensile Strength (Lbs. Per Sq. In.)	Avg. Yield Strength 0.2% Offset (Lbs. Per Sq. In.)	Elongation in Two Inch (%)	Brinnell Hardness (500 Kg Load)
Copper (Cu) 83 Tin (Sn) 7 Lead (Pb) 7 Zinc (Zn) 3	35,000	20,000	15	60
Bear-N-Bronz conforms to SAE CA932 (660) and ASTM B584-78 (alloy C93200) specifications.				

SPECIAL COMPOSITIONS

In addition to our standard BEAR-N-BRONZ (SAE CA 932) material, many special compositions can be furnished on a made-to-order basis.

The Chemical compositions and physical properties of some of the more popular are listed.

Grade	Equivalent S.A.E. Number	Composition (%)	Average Yield Strength 0.2% Offset (Lbs. Per Sq. In.)	Average Tensile Strength (Lbs. Per Sq. In.)	Elongation in Two Inch (%)	Brinnell Hardness (500 Kg Load)
206 Leaded Gun Metal	CA927	Copper (Cu) 88 Tin (Sn) 10 Lead (Pb) 2	40,000	20,000	25	70
210 Gun Metal	CA905	Copper (Cu) 88 Tin (Sn) 10 Zinc (Zn) 2	45,000	22,000	25	65
305 Phosphor Bronze	CA937	Copper (Cu) 80 Tin (Sn) 10 Lead (Pb) 10	35,000	18,000	20	63
319 Semi-Plastic Bronze	CA938	Copper (Cu) 78 Tin (Sn) 7 Lead (Pb) 15	30,000	17,000	15	55

SELECTION

In general, sleeve bearings should be selected with a length of one to two times the shaft diameter and an O.D. approximately 25% larger than the shaft diameter.

A general guide to determination of limiting load and velocity values for sleeve bearings has been established by the use of PV calculations. PV represents Pressure x Velocity, for example 100 psi x 20 fpm yields a PV of 2000.

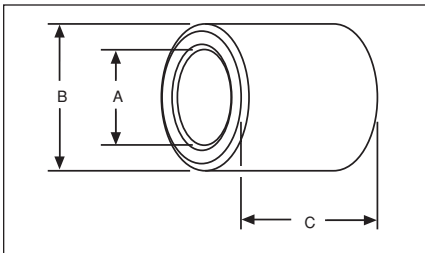
Maximum PV value for BEAR-N-BRONZ bearings: 75,000.

For complete selection and application information, see Engineering Section, Pages 46-54.

BEAR-N-BRONZ 660 CAST BRONZE BEARINGS

PLAIN CYLINDRICAL BEARINGS

ALL DIMENSIONS IN INCHES
ORDER BY CATALOG NUMBER OR ITEM CODE



STANDARD TOLERANCES

Dimensions	Tolerance
A	3/16 – 3 3-1/4 – 4-1/2
B	5/16 – 3 3-1/8 – 5
C	All

STANDARD CONCENTRICITY

Dimensions	T.I.R. (A to B)
A	All

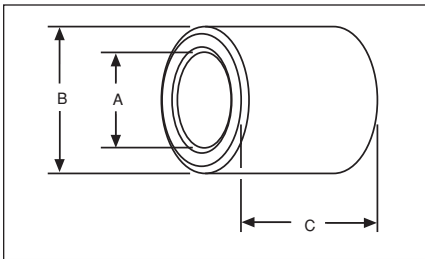
For Oil Grooves see Page 51.

A	B	C	Catalog Number	Item Code	A	B	C	Catalog Number	Item Code		
3/16	5/16	1/2	M35-4	31308	1/2	1	1-1/2	M816-12	31460		
		3/4	M35-6	31310			2	M816-16	31462		
		1	M35-8	31312			2-1/4	M816-18	31464		
1/4	3/8	3/4	M46-6	31314	11/16	11/16	1	M911-8	31466		
		1	M46-8	31316			1-1/4	M911-10	31468		
		1-1/4	M46-10	31318			1-1/2	M911-12	31470		
	7/16	3/4	M47-6	31320			1-3/4	M911-14	31472		
		1	M47-8	31322			2	M911-16	31474		
		1-1/4	M47-10	31324			2-1/4	M911-18	31476		
5/16	7/16	3/4	M57-6	31326	9/16	3/4	1	M912-8	31480		
		1	M57-8	31328			1-1/4	M912-10	31482		
		1-1/4	M57-10	31330			1-1/2	M912-12	31484		
1/2	3/4	M58-6	31332	1-3/4			M912-14	31486			
	1	M58-8	31334	2			M912-16	31488			
	1-1/4	M58-10	31336	2-1/2			M912-20	31492			
3/8	1/2	3/4	M68-6	31338	13/16	13/16	1	M913-8	31494		
		1	M68-8	31340			1-1/4	M913-10	31496		
		1-1/4	M68-10	31342			1-1/2	M913-12	31498		
	9/16	1-1/2	M68-12	31344			1-3/4	M913-14	31500		
		3/4	M69-6	31346			2	M913-16	31502		
		1	M69-8	31348			7/8	1	M914-8	31506	
1-1/4	M69-10	31350	1-1/2	M914-12	31508						
2	M914-16	31510	2	M914-16	31510						
7/16	5/8	3/4	M610-6	31362	3/4	3/4	1	M1012-8	31512		
		1	M610-8	31364			1-1/8	M1012-9	31514		
		1-1/4	M610-10	31366			1-1/4	M1012-10	31516		
	9/16	1-1/2	M610-12	31368			1-1/2	M1012-12	31518		
		1	M79-8	31352			1-3/4	M1012-14	31520		
		1-1/4	M79-10	31354			2	M1012-16	31522		
5/8	5/8	1-1/2	M79-12	31356	13/16	13/16	2-1/4	M1012-18	31524		
		2	M79-12	31356			2-1/2	M1012-20	31526		
		1	M710-8	31370			7/8	1	M1013-8	31528	
	1-1/4	M710-10	31372	1-1/4				M1013-10	31530		
	1-1/2	M710-12	31374	1-1/2				M1013-12	31532		
	13/16	2	M710-16	31376			5/8	7/8	1-3/4	M1013-14	31534
11/16		1-1/2	M711-12	2	M1013-16	31536					
3/4		1	M712-8	2-1/4	M1013-18	31538					
1/2	5/8	1-1/2	M712-12	31384	15/16	15/16	2-1/2	M1013-20	31540		
		1	M713-12	31386			1	3/4	M1014-6	31542	
		5/8	5/8	M810-5				31388	1	M1014-8	31544
		3/4	M810-6	31390				1-1/4	M1014-10	31548	
		7/8	M810-7	31392			1-1/2	M1014-12	31550		
		1	M810-8	31394			1-3/4	M1014-14	31552		
	1-1/4	M810-10	31396	2	M1014-16	31554					
	1-3/8	M810-11	31398	2-1/4	M1014-18	31556					
	1-1/2	M810-12	31400	2-1/2	M1014-20	31558					
	1-3/4	M810-14	31402	3	M1014-24	31560					
	2	M810-16	31404	11/16	11/16	1	M1015-8	31562			
	2-1/4	M810-18	31406			1	1-1/2	M1015-12	31564		
3/4	M811-6	31408	2-1/2				M1015-20	31568			
1	M811-8	31410	7/8				1	M1016-8	31570		
1-1/4	M811-10	31412				1-1/2	M1016-12	31572			
1-1/2	M811-12	31414				2	M1016-16	31574			
1-3/4	M811-14	31416	13/16	13/16	2-1/4	M1016-18	31576				
2	M811-16	31418			2-1/2	M1016-20	31578				
2-1/4	M811-18	31420			3	M1016-24	31580				
2-1/2	M811-20	31422			1-1/8	1-1/2	M1018-12	31582			
3/4	M812-6	31424				2	M1018-16	31584			
1	M812-8	31426				2-1/4	M1018-18	31586			
1-1/4	M812-10	31428	7/8	7/8	1	M1113-8	31588				
1-1/2	M812-12	31430			1-1/2	M1113-12	31592				
1-3/4	M812-14	31432			1-3/4	M1113-14	31594				
2	M812-16	31434			2	M1113-16	31596				
2-1/4	M812-18	31436			15/16	1	M1114-8	31600			
2-1/2	M812-20	31438				1-1/4	M1114-10	31602			
2-3/4	M812-22	31440	1-1/2	M1114-12		31604					
13/16	1	M813-8	31442	1	1	2	M1114-16	31608			
1-1/2	M813-12	31444	2-1/2			M1114-20	31612				
2-1/4	M813-18	31446	15/16			1	M1115-8	31614			
1	M814-8	31448				1-1/4	M1115-10	31616			
1-1/4	M814-10	31450				1-1/2	M1115-12	31618			
1-1/2	M814-12	31452	2-1/2			M1115-20	31626				
1-3/4	M814-14	31454	1	1-1/4	M1116-10	31628					
2	M814-16	31456		2-1/4	M1116-18	31634					
1	M816-8	31458		2-1/2	M1116-20	31636					

BEAR-N-BRONZ 660 CAST BRONZE BEARINGS

PLAIN CYLINDRICAL BEARINGS

ALL DIMENSIONS IN INCHES
ORDER BY CATALOG NUMBER OR ITEM CODE



STANDARD TOLERANCES

	Dimensions	Tolerance
A	3/16 – 3	±.001
	3-1/4 – 4-1/2	±.0015
B	5/16 – 3	+.002 to +.003
	3-1/8 – 5	+.003 to +.005
C	All	±.005

STANDARD CONCENTRICITY

	Dimensions	T.I.R. (A to B)
A	All	.003

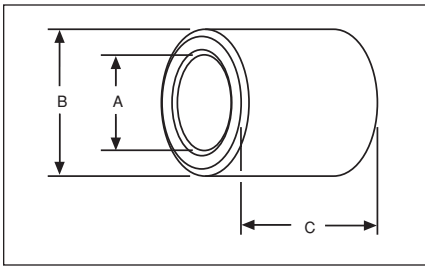
For Oil Grooves see Page 51.

A	B	C	Catalog Number	Item Code	A	B	C	Catalog Number	Item Code				
3/4	7/8	3/4	M1214-6	31640	7/8	1-1/8	1-1/2	M1418-12	31826				
		1	M1214-8	31642			1-3/4	M1418-14	31828				
		1-1/4	M1214-10	31644			2	M1418-16	31830				
		1-1/2	M1214-12	31646			2-1/4	M1418-18	31832				
		1-3/4	M1214-14	31648			2-1/2	M1418-20	31834				
		2	M1214-16	31650			3	M1418-24	31836				
		2-1/4	M1214-18	31652			3-1/4	M1418-26	31838				
		2-1/2	M1214-20	31654			3-1/2	M1418-28	31840				
		15/16	1	1			M1215-8	31656	7/8	1-3/16	1	M1419-8	31842
				1-1/4			M1215-10	31658			3	M1419-24	31852
	1-1/2			M1215-12	31662	1-1/4	1-1/2	M1420-12		31854			
	1-3/4			M1215-14	31664		1-3/4	M1420-14		31856			
	2			M1215-16	31666		2	M1420-16		31858			
	2-1/4			M1215-18	31668		2-1/4	M1420-18		31860			
	2-1/2			M1215-20	31670		2-1/2	M1420-20		31862			
	3			M1215-24	31674		3	M1420-24		31864			
	3/4			1	3/4		M1216-6	31676		3-1/2	M1420-28	31866	
					1		M1216-8	31678		1-3/8	1-1/2	M1422-12	31868
		1-1/8	M1216-9		31680	2	M1422-16	31872					
		1-1/4	M1216-10		31682	2-1/2	M1422-20	31874					
		1-3/8	M1216-11		31684	3	M1422-24	31876					
		1-1/2	M1216-12		31686	15/16	1-1/8	1-1/2	M1518-12	31878			
		1-3/4	M1216-14		31688			2	M1518-16	31880			
		2	M1216-16		31690		1-3/16	1-1/4	M1519-10	31884			
		2-1/8	M1216-17		31692			1-1/2	M1519-12	31886			
		2-1/4	M1216-18		31694			2	M1519-16	31888			
	2-1/2	M1216-20	31696	3	M1519-24			31894					
	2-3/4	M1216-22	31698	1-1/4	1		M1520-8	31896					
	3	M1216-24	31700		1-1/2		M1520-12	31898					
	3-1/2	M1216-28	31702	2	M1520-16		31900						
	1-1/16	1-1/16	1	M1217-8	31704		2-1/2	M1520-20	31902				
			1-1/2	M1217-12	31706	2-3/4	M1520-22	31904					
			2	M1217-16	31708	1-5/16	1-1/2	M1521-12	31906				
			3	M1217-24	31714		2	M1521-16	31910				
		1-1/8	1	M1218-8	31716	1	1-1/4	1-3/8	M1618-11	31916			
			1-1/2	M1218-12	31718			1-1/2	M1618-12	31918			
			2	M1218-16	31720			1-3/4	M1618-14	31920			
			2-1/2	M1218-20	31724			2	M1618-16	31922			
		3	M1218-24	31726	1-3/16			2-1/2	M1618-20	31924			
		1-1/2	M1219-12	31728				7/8	M1619-7	31926			
	2	M1219-16	31730	1-1/4				M1619-10	31928				
	1-3/4	M1220-14	31734	1-1/2				M1619-12	31930				
	1-1/4	2	M1220-16	31736	1-3/4			M1619-14	31932				
		2-1/2	M1220-20	31740	2			M1619-16	31934				
		3	M1220-24	31742	2-1/2	M1619-20	31936						
		15/16	1	M1315-8	31744	1	1-1/4	3/4	M1620-6	31938			
	1-1/2	M1315-12	31748	1	M1620-8			31940					
	2	M1315-16	31750	1-1/8	M1620-9			31942					
	1	1-1/2	M1316-12	31752	1-1/4			M1620-10	31944				
		2	M1316-16	31756	1-3/8			M1620-11	31946				
		2-1/2	M1316-20	31758	1-1/2			M1620-12	31948				
	13/16	1-1/16	1-1/2	M1317-12	31760			1-5/8	M1620-13	31950			
			2	M1317-16	31762			1-3/4	M1620-14	31952			
			2-3/4	M1317-22	31766			2	M1620-16	31954			
			1-1/2	M1318-12	31770			2-1/4	M1620-18	31956			
	2	M1318-16	31772	7/8	1-1/16	2-1/2	M1620-20	31958					
	1	1	M1416-8			31788	2-3/4	M1620-22	31960				
		1-1/4	M1416-10			31790	3	M1620-24	31962				
		1-3/8	M1416-11			31792	4	M1620-32	31968				
		1-1/2	M1416-12			31794	4-1/2	M1620-36	31970				
		1-5/8	M1416-13			31796	1-5/16	1-1/2	M1621-12	31972			
		2	M1416-16			31798		2	M1621-16	31974			
		1	M1417-8			31800		2-1/4	M1621-18	31976			
		1-1/4	M1417-10			31802		2-1/2	M1621-20	31978			
		7/8	1-1/16			1-1/2	M1417-12	31804	3	M1621-24	31980		
				1-3/4	M1417-14	31806	3-1/2	M1621-28	31982				
	2			M1417-16	31808	1-3/8	1-1/4	M1622-10	31988				
	2-1/4			M1417-18	31810		1-1/2	M1622-12	31990				
	2-1/2			M1417-20	31812		1-3/4	M1622-14	31992				
	3			M1417-24	31816		2	M1622-16	31994				
	1-1/8			3/4	M1418-6	31818	1	1-1/4	1-1/2	M1622-18	31996		
				1	M1418-8	31820			1-3/4	M1622-20	31998		
				1-1/4	M1418-10	31822			2	M1622-24	32000		
				1-3/8	M1418-11	31824							

BEAR-N-BRONZ 660 CAST BRONZE BEARINGS

PLAIN CYLINDRICAL BEARINGS

ALL DIMENSIONS IN INCHES
ORDER BY CATALOG NUMBER OR ITEM CODE



STANDARD TOLERANCES

Dimensions	Tolerance
A 3/16 – 3 3-1/4 – 4-1/2	±.001 ±.0015
B 5/16 – 3 3-1/8 – 5	+.002 to +.003 +.003 to +.005
C All	±.005

STANDARD CONCENTRICITY

Dimensions	T.I.R. (A to B)
A All	.003

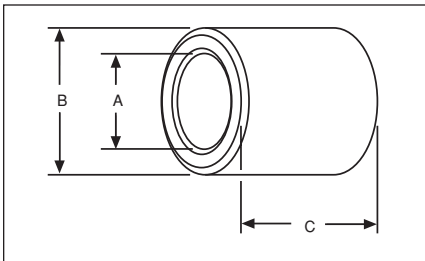
For Oil Grooves see Page 51.

A	B	C	Catalog Number	Item Code	A	B	C	Catalog Number	Item Code	
1	1-3/8	2-1/2	M1622-20	31996	1-3/16	1-11/16	2	M1927-16	32172	
		2-3/4	M1622-22	31998			2-1/2	M1927-20	32174	
		3	M1622-24	32000			3	M1927-24	32176	
		3-1/2	M1622-28	32004			1-7/16	2-1/2	M2023-20	32180
	4	M1622-32	32006	3		M2023-24		32182		
	4-1/2	M1622-36	32008	1		M2024-8		32184		
	1-1/2	M1624-12	32010	1-1/8		M2024-9		32186		
	1-1/2	1-1/2	1-3/4	M1624-14		32012	1-1/4	M2024-10	32188	
			2	M1624-16		32014	1-3/8	M2024-11	32190	
			2-1/2	M1624-20		32016	1-1/2	M2024-12	32192	
			3	M1624-24		32018	1-5/8	M2024-13	32194	
		4	M1624-32	32020		1-3/4	M2024-14	32196		
1-5/8		2	M1626-16	32022	2	M2024-16	32198			
	2-1/2	M1626-20	32024	2-1/4	M2024-18	32200				
	3	M1626-24	32026	2-1/2	M2024-20	32202				
	3-1/2	M1626-28	32028	2-3/4	M2024-22	32204				
1-3/4	6-1/2	M1628-52	32030	3	M2024-24	32206				
	2	3	M1632-24	32032	M2024-26	32208				
1-1/16	1-5/16	6-1/2	M1632-24	32032	3-1/2	M2024-28	32210			
		3	M1632-24	32032	4	M2024-32	32212			
1-1/16	1-5/16	1-1/2	M1721-12	32036	4-1/4	M2024-34	32214			
		2	M1721-16	32038	4-1/2	M2024-36	32216			
	2-1/2	M1721-20	32040	5	M2024-40	32218				
	1-7/16	2-1/2	M1723-20	32050	5-1/2	M2024-44	32220			
1-1/8	1-1/4	1-1/2	M1820-12	32062	1-1/4	1-9/16	2	M2025-16	32222	
		1-3/4	M1820-14	32064			2-1/2	M2025-20	32224	
		2	M1820-16	32066			3	M2025-24	32226	
	1-5/16	2-1/4	M1821-18	32068		3-1/2	M2025-28	32228		
		2-1/2	M1821-20	32070		3-3/4	M2025-30	32230		
		1	M1822-8	32072		1-3/4	M2026-14	32232		
	1-3/8	1-1/4	1-1/4	M1822-10	32074	2	M2026-16	32234		
			1-1/2	M1822-12	32076	2-1/2	M2026-20	32236		
			1-3/4	M1822-14	32078	3	M2026-24	32238		
			2	M1822-16	32080	3-1/4	M2026-26	32240		
		1-3/8	2-1/4	M1822-18	32082	3-1/2	M2026-28	32242		
			2-1/2	M1822-20	32084	4	M2026-32	32244		
3			M1822-24	32086	4-1/2	M2026-36	32246			
3-1/4			M1822-26	32088	4-3/4	M2026-38	32248			
1-1/8		3-1/2	M1822-28	32090	1-11/16	2	M2027-16	32250		
		4	M1822-32	32092		3-1/4	M2027-26	32254		
		1-7/16	1-1/2	M1823-12	32094	1-3/4	1-3/4	M2028-14	32258	
			3	M1823-24	32098		2	M2028-16	32260	
1-1/2	1-1/2	M1824-12	32102	2-1/4	M2028-18		32262			
	2	M1824-16	32104	2-1/2	M2028-20		32264			
	2-1/2	M1824-20	32106	2-3/4	M2028-22		32266			
	3	M1824-24	32108	3	M2028-24		32268			
1-1/8	1-3/8	3-1/2	M1824-28	32110	3-1/2	M2028-28	32270			
		4	M1824-32	32112	3-3/4	M2028-30	32272			
		1-3/4	M1826-14	32114	4	M2028-32	32274			
		2	M1826-16	32116	5	M2028-40	32276			
	1-5/8	2-1/2	M1826-20	32118	1-7/8	2	M2030-16	32278		
		3	M1826-24	32120		2-1/2	M2030-20	32280		
		3-1/2	M1826-28	32122		4	M2030-32	32284		
		4-1/2	M1826-36	32126		3	M2032-24	32286		
	1-7/8	6-1/2	M1830-52	32128		4	M2032-32	32288		
	2	3	M1832-24	32130		6-1/2	M2032-52	32290		
	1-3/16	1-3/8	1-3/4	M1922-14	32134	1-5/16	1-1/2	1-3/4	M2124-14	32296
			2	M1922-16	32136			3	M2124-24	32298
2-1/2			M1922-20	32138	2			M2126-16	32306	
1-7/16		1-1/4	M1923-10	32140	3		M2126-24	32310		
		1-1/2	M1923-12	32142	4-3/4		M2126-38	32314		
		2	M1923-16	32144	1-13/16		3	M2129-24	32324	
		2-1/2	M1923-20	32146		4	M2129-32	32328		
3		M1923-24	32148	1-7/8		3-1/2	M2130-28	32330		
3-1/2		M1923-28	32150		1-3/8	1-3/4	M2224-14	32334		
2		M1924-16	32152			2	M2224-16	32336		
1-1/2		3	M1924-24	32154		2-1/2	M2224-20	32338		
		4	M1924-32	32158		2	M2226-16	32340		
1-9/16	3	M1925-24	32162	3		M2226-24	32342			
	3-1/2	M1925-28	32164	3-1/4		M2226-26	32344			
1-5/8	2	M1926-16	32166	3-1/2	M2226-28	32346				
	2-1/2	M1926-20	32168	4	M2226-32	32348				
	3	M1926-24	32170	3-1/2	M2227-28	32352				

BEAR-N-BRONZ 660 CAST BRONZE BEARINGS

PLAIN CYLINDRICAL BEARINGS

ALL DIMENSIONS IN INCHES
ORDER BY CATALOG NUMBER OR ITEM CODE



STANDARD TOLERANCES

Dimensions	Tolerance
A	3/16 – 3 3-1/4 – 4-1/2
B	5/16 – 3 3-1/8 – 5
C	All

STANDARD CONCENTRICITY

Dimensions	T.I.R. (A to B)
A	All

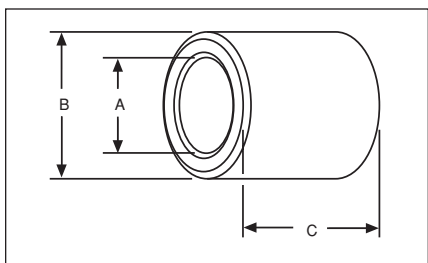
For Oil Grooves see Page 51.

A	B	C	Catalog Number	Item Code	A	B	C	Catalog Number	Item Code								
1-3/8	1-3/4	2	M2228-16	32354	1-5/8	2	1-3/4	M2632-14	32526								
		2-1/4	M2228-18	32356			2-1/2	M2632-20	32528								
		2-1/2	M2228-20	32358			2	M2632-24	32530								
		3	M2228-24	32360			4	M2632-32	32534								
		3-1/2	M2228-28	32362			5	M2632-40	32538								
		4	M2228-32	32364			5-1/2	M2632-44	32540								
	1-7/8	3	M2230-24	32366		2-1/8	3	M2634-24	32542								
		3-1/2	M2230-28	32368			4	M2634-32	32544								
		4	M2230-32	32370			1-11/16	1-15/16	3	M2731-24	32550						
		4-1/2	M2230-36	32372					3-1/2	M2731-28	32552						
		2	3	M2232-24					32374	2	3-1/2	M2732-28	32554				
			4	M2232-32					32376		4-1/2	M2732-36	32556				
2-1/8	6-1/2		M2234-52	32378	2-1/16	3			M2733-24		32558						
	1-3/4	1-3/4	M2326-14	4		M2733-32			32562								
	2-3/4	2-3/4	M2326-22	4-1/2		M2733-36		32564									
1-7/16	1-5/8	3	M2326-24	32384		2-3/16		5-1/2	M2733-44		32568						
		1-11/16	2-1/2	M2327-20				32386	2-1/4	2	M2735-16	32570					
			3	M2327-24				32388		3	M2735-24	32574					
			3-1/2	M2327-28	32390			4		M2735-32	32578						
		4	M2327-32	32392	1-3/4			2		3	M2736-24	32586					
		1-13/16	2-1/4	M2328-18			32396			2-1/8	4-1/2	M2736-36	32588				
	3		M2328-24	32398		2-1/16	2-1/4				M2832-18	32590					
	4		M2328-32	32400			2-1/2		M2832-20		32592						
	1-7/8	3	M2329-24	32402			3		M2832-24		32594						
		4-1/4	M2329-34	32410			4		M2832-32		32596						
		1-15/16	3	M2330-24			32414	4-1/2	M2832-36		32598						
	4		M2330-32	32416			5-1/4	M2832-42	32600								
4-1/2	M2330-36		32420	1-13/16		2-3/8	3-1/2	M2833-28	32602								
5	M2330-40	32422	2-1/4				2-3/4	M2834-22	32604								
2	2	M2331-16					32424	3-1/4	M2834-26	32606							
	3	M2331-24					32426	3-1/2	M2834-28	32608							
	4	M2332-32			32438		4	M2834-32	32610								
1-1/2	1-5/8	4			M2426-16		32440	2-3/8	4-1/4	M2834-34	32612						
		2			M2426-16	32440	5		M2834-40	32614							
		1-11/16	2-3/4		M2427-22	32442	1-3/4		2-1/4	1-3/4	M2836-14	32618					
			1-3/4		1-3/4	M2428-14				32444	2	M2836-16	32620				
					2	M2428-16				32446	2-1/2	M2836-20	32622				
					2-1/4	M2428-18				32448	3	M2836-24	32624				
	2-1/2				M2428-20	32450		3-1/2		M2836-28	32626						
	3			M2428-24	32452	4		M2836-32		32628							
	3-1/2	M2428-28		32454	4-1/4	M2836-34		32630									
	1-1/2	1-3/4	4	M2428-32	32456	5		M2836-40	32632								
			4-1/2	M2428-36	32458	2-3/8		2-1/2	3-1/2	M2838-28	32634						
			5	M2428-40	32460				5	M2838-40	32638						
5-1/2			M2428-44	32462	1-13/16				2-3/16	6-1/2	M2840-52	32640					
3			M2429-24	32464						2-5/16	4	M2935-32	32642				
1-3/4			2	M2430-16			32466				1-7/8	2-1/8	4	M2937-32	32646		
		2-1/2	M2430-20	32468			1-7/8						2-1/4	5	M2937-40	32648	
		2-3/4	M2430-22	32470		1-1/2		2-3/8						2-1/2	M3034-20	32650	
		3	M2430-24	32472										1-13/16	2-3/8	3	M3034-24
		3-1/2	M2430-28	32474					4							M3034-32	32654
		4	M2430-32	32476					1-15/16	2-5/16						3	M3036-24
4-1/2		M2430-36	32478	5							M3036-40	32662					
5	M2430-40	32480	1-15/16	2-3/8			3				M3038-24	32664					
5-1/2	M2430-44	32482				4	M3038-32	32666									
1-1/2	2	2-1/2				M2432-20	32484	5-1/4			M3038-42	32668					
		3			M2432-24	32486	1-15/16	2-3/16			2	M3135-16	32670				
		3-1/2			M2432-28	32488			3	M3135-24	32672						
		4			M2432-32	32490			2-1/4	2-1/4	3	M3136-24	32676				
		4-1/2	M2432-36	32492	4-1/2	M3136-36					32678						
		5	M2432-40	32494	1-15/16	2-5/16					3-1/2	M3137-28	32680				
2-1/8	3	M2434-24	32496	4							M3137-32	32682					
	4	M2434-32	32498	5				M3137-40			32684						
	5	M2434-40	32500	6-1/4				M3137-50			32688						
1-9/16	2-1/4	3	M2436-24	32500				1-15/16	2-3/8	4	M3138-32	32692					
		4	M2436-32	32502						5-1/2	M3138-44	32694					
		5	M2436-40	32504	2-7/16	2-1/2				3	M3139-24	32696					
		6-1/2	M2436-52	32506						1-5/8	1-7/8	3	M3140-24	32704			
		1-13/16	3	M2529-24			32508					5	M3140-40	32706			
			3-1/2	M2529-28			32510					1-5/8	1-7/8	1-7/8	2-1/4	M2630-18	32518
3-1/2	M2531-28		32514	3			M2630-24	32520									
4	M2630-30	32522	3-3/4	M2630-30			32524										

BEAR-N-BRONZ 660 CAST BRONZE BEARINGS

PLAIN CYLINDRICAL BEARINGS

ALL DIMENSIONS IN INCHES
ORDER BY CATALOG NUMBER OR ITEM CODE



STANDARD TOLERANCES

	Dimensions	Tolerance
A	3/16 – 3	±.001
	3-1/4 – 4-1/2	±.0015
B	5/16 – 3	+ .002 to +.003
	3-1/8 – 5	+ .003 to +.005
C	All	±.005

STANDARD CONCENTRICITY

	Dimensions	T.I.R. (A to B)
A	All	.003

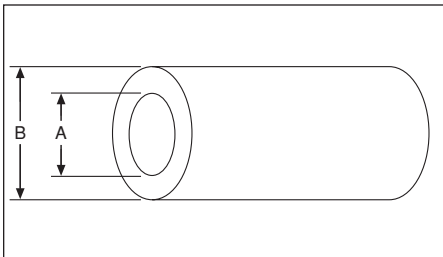
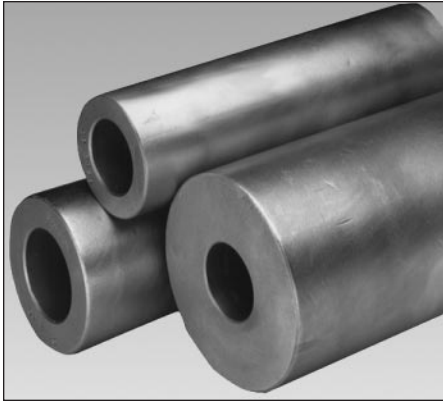
For Oil Grooves see Page 51.

A	B	C	Catalog Number	Item Code	A	B	C	Catalog Number	Item Code			
2	2-1/4	2	M3236-16	32708	2-1/2	3-1/8	3-1/2	M4050-28	32860			
		2-1/2	M3236-20	32710			4	M4050-32	32862			
		3	M3236-24	32712			4-1/2	M4050-36	32864			
		3-1/2	M3236-28	32714		4	M4052-32	32868				
		4	M3236-32	32718		5	M4052-40	32870				
		4-1/2	M3236-36	32720		6	M4052-48	32872				
	2-3/8	3	M3238-24	32724	2-5/8	3-1/4	7-1/4	M4052-58	32874			
		3-1/2	M3238-28	32726			3-1/2	6-1/2	M4056-52	32876		
		4	M3238-32	32728			3	3	M4248-24	32878		
		4-1/2	M3238-36	32730		5	M4248-40	32882				
		2-1/2	M3240-20	32732		5	M4250-40	32884				
		3	M3240-24	32734		6	M4250-48	32886				
	2-1/2	3-1/2	M3240-28	32736	2-11/16	3-1/8	7-1/4	M4250-58	32888			
		4	M3240-32	32738			3-1/4	7	M4252-56	32890		
		4-1/2	M3240-36	32740			3-3/8	6-1/2	M4254-52	32892		
		5	M3240-40	32742		3-3/16	6-1/4	M4351-50	32898			
		6	M3240-48	32746		2-3/4	3-1/8	4	M4450-32	32900		
		2-5/8	4	M3242-32				5	M4450-40	32902		
2-3/4	6-1/2	M3244-52	6	M4450-48	32904							
2-1/8	2-1/2	3	M3440-24	32752	2-7/8	3-1/2	4	M4452-32	32906			
		4	M3440-32	32754			5	M4452-40	32908			
	2-5/8	4	M3442-32	32756			6	M4452-48	32910			
		5	M3442-40	32758		2-15/16	3-7/16	4-1/2	M4656-36	32926		
		6	M3442-48	32760				6-3/4	M4656-54	32928		
		4	M3542-32	32762				3-1/2	3-1/2	M4755-28	32930	
2-3/16	2-11/16	3-1/2	M3543-28	32766	5		M4755-40	32932				
		4-1/2	M3543-36	32770	6-1/2		M4755-52	32934				
	2-3/4	5	M3543-40	32772	3		3-3/8	4-1/2	M4854-36	32936		
		4-1/2	M3544-36	32774		8		M4854-64	32938			
2-7/8	5-1/4	M3544-42	32776	3-1/2		3-1/2		4-1/2	M4856-36	32940		
	6	M3544-48	32778				6	M4856-48	32942			
2-1/4	2-1/2	4-1/2	M3546-36				32780	3-1/4	3-3/4	9	M4856-72	32944
		3-1/2	M3640-28	32782		3-5/8	5			M4858-40	32946	
		4	M3640-32	32784	3-3/4	6-1/4	M4860-50			32952		
	2-5/8	2-11/16	3	M3642-24	32786	3-1/4	3-3/4	4	6-1/2	M4864-52	32954	
			4	M3642-32	32788			3-1/2	4	M5256-32	32956	
			5	M3642-40	32790			5	M5260-40	32958		
	2-3/4	2-3/4	4-3/4	M3643-38	32792	3-7/16	3-15/16	4-1/2	M5563-36	32964		
			3-1/2	M3644-28	32794			6-1/2	M5563-52	32966		
			4	M3644-32	32796			3-1/2	4	5-1/2	M5664-44	32968
		4-1/2	M3644-36	32798	7		M5664-56			32970		
		5	M3644-40	32800	4-1/8		4-1/2			6	M5666-48	32972
		6	M3644-48	32802				7	M5668-36	32974		
3-1/2	M3648-28	32806	7	M5668-56		32976						
2-3/8	2-3/4	5	M3648-40	32808	3-3/4	4-1/4	9-3/4	M5668-78	32978			
		4	M3844-32	32812			4-1/4	4-1/4	5	M6068-40	32980	
		6	M3844-48	32816					7	M6068-56	32982	
	2-7/8	2-3/4	4	M3846-32	32818	4			4-1/2	6-1/2	M6072-52	32984
			5	M3846-40	32820		5	5		4	M6472-32	32986
			4	M3944-32	32824					6	M6472-48	32988
2-7/16	2-7/8	5	M3944-40	32826	5	5			7	M6472-56	32990	
		3	M3946-24	32828			4-1/4	4-3/4	5	M6480-40	32992	
		5	M3946-40	32830					6	M6480-48	32994	
2-15/16	2-7/8	4	M3947-32	32832	4-1/4	4-3/4			6	M6876-40	32998	
		5	M3947-40	32834			7	M6876-48	33000			
		6-1/4	M3947-50	32836			7	M6876-56	33002			
2-1/2	2-3/4	3-3/4	M3948-30	32838	4-1/2	5	5	M6880-40	33004			
		5	M3948-40	32840			6	M6880-48	33006			
		6-1/4	M3948-50	32842			7	M6880-56	33008			
	2-7/8	2-3/4	4	M4044-32		32844	5	5	6	M7280-48	33010	
			5	M4044-40		32846			7	M7280-56	33012	
			3-1/4	M4046-26		32848			8	M7280-64	33014	
2-1/2	2-7/8	4-1/2	M4046-36	32850	3	3	4	M4048-32	32852			
		4	M4048-32	32852			5	M4048-40	32854			
	5	M4048-40	32854	6			M4048-48	32856				
	7	M4048-56	32858	7			M4048-56	32858				

BEAR-N-BRONZ 660 CAST BRONZE BEARINGS

CORED BARS

ALL DIMENSIONS IN INCHES
ORDER BY CATALOG NUMBER OR ITEM CODE



A	B	Aprx. Wgt. (Lbs.)	Catalog Number	Item Code	A	B	Aprx. Wgt. (Lbs.)	Catalog Number	Item Code
1/2	1	2-3/4	MCB816	33016	1-1/8	1-3/8	2-1/4	MCB1822	47647
	1-1/8	3-3/4	MCB818	33018		1-1/2	4-1/2	MCB1824	47648
	1-1/4	4-3/4	MCB820	33020		1-5/8	5	MCB1826	33112
	1-1/2	7	MCB824	33024		2-1/8	11-1/2	MCB1834	33120
	1-3/4	9-3/4	MCB828	33026		2-3/8	15	MCB1838	33124
	2	12-3/4	MCB832	33028		2-1/2	16-1/2	MCB1840	33126
5/8	1	2	MCB1016	47640	1-1/4	2-3/4	21	MCB1844	33128
	1-1/8	3	MCB1018	33030		2-7/8	24	MCB1846	33130
	1-1/4	4	MCB1020	33032		1-1/2	2-1/2	MCB2024	47649
	1-3/8	5	MCB1022	33034		1-5/8	3-7/8	MCB2026	47650
	1-1/2	6-1/2	MCB1024	33036		1-3/4	5-1/2	MCB2028	33132
	1-3/4	9	MCB1028	33040		1-7/8	7	MCB2030	33134
3/4	1	1-1/2	MCB1216	47641	2	8-1/2	MCB2032	33136	
	1-1/8	2-1/2	MCB1218	47642	2-1/8	10-1/2	MCB2034	33138	
	1-1/4	3-1/2	MCB1220	33046	2-1/4	12	MCB2036	33140	
	1-3/8	4-1/2	MCB1222	33048	2-3/8	14	MCB2038	33142	
	1-1/2	5-1/2	MCB1224	33050	2-1/2	16	MCB2040	33144	
	1-3/4	8	MCB1228	33054	2-3/4	20	MCB2044	33148	
	2	11-1/2	MCB1232	33058	3	25	MCB2048	33152	
	2-1/4	15	MCB1236	33062	3-1/4	30	MCB2052	33154	
	2-1/2	19-1/2	MCB1240	33064	3-1/2	35-1/2	MCB2056	33156	
	2-3/4	24	MCB1244	33066	1-3/8	1-3/4	4-1/4	MCB2228	47652
7/8	1-1/8	1-7/8	MCB1418	47643		1-7/8	6	MCB2230	33160
	1-1/4	2-7/8	MCB1420	47644		2	7-1/2	MCB2232	33162
	1-3/8	4	MCB1422	33068		2-1/8	9-1/2	MCB2234	33164
	1-1/2	5	MCB1424	33070		2-1/4	11	MCB2236	33166
	1-5/8	6-1/2	MCB1426	33072		2-3/8	12-1/2	MCB2238	33168
	1-3/4	7-1/2	MCB1428	33074	2-1/2	15	MCB2240	33170	
2	11	MCB1432	33078	2-5/8	17	MCB2242	33172		
1	1-1/4	2	MCB1620	47645	2-3/4	19	MCB2244	33174	
	1-3/8	3-1/8	MCB1622	47646	1-1/2	1-3/4	3	MCB2428	47653
	1-1/2	4-1/2	MCB1624	33084		1-7/8	4-1/2	MCB2430	47654
	1-5/8	5-1/2	MCB1626	33086		2	6	MCB2432	33178
	1-3/4	7	MCB1628	33088		2-1/8	8	MCB2434	33180
	1-7/8	8-1/2	MCB1630	33090		2-1/4	10	MCB2436	33182
	2	10	MCB1632	33092		2-3/8	11-1/2	MCB2438	33184
	2-1/4	13-1/2	MCB1636	33096		2-1/2	14	MCB2440	33186
	2-1/2	17-1/2	MCB1640	33100		2-5/8	16	MCB2442	33188
	2-3/4	22	MCB1644	33102		2-3/4	18	MCB2444	33190
	3	27	MCB1648	33104		3-1/4	27-1/2	MCB2452	33194
	2-1/4	32	MCB1652	33106		3-1/2	33	MCB2456	33196
	3-1/2	37-1/2	MCB1656	33108		3-3/4	40	MCB2460	33198
	4	50	MCB1664	33110		4	45	MCB2464	33200
				4-1/2		62	MCB2472	33202	

STANDARD TOLERANCES

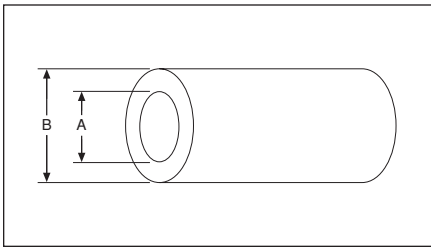
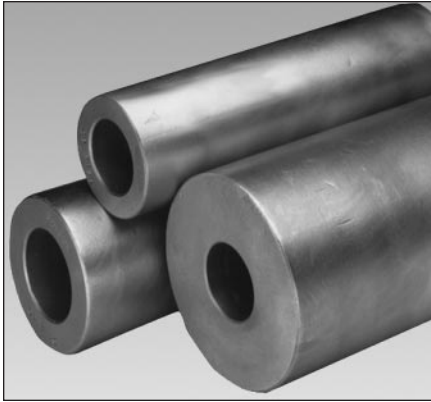
Dimensions	Tolerance
A	1/2 - 4 4-1/4 - 8
B	1 - 4 4-1/4 - 9

All bars are 13" long.
Contact factory for bars longer than 13". Available in lengths up to 105".

BEAR-N-BRONZ 660 CAST BRONZE BEARINGS

CORED BARS

ALL DIMENSIONS IN INCHES
ORDER BY CATALOG NUMBER OR ITEM CODE



A	B	Aprx. Wgt. (Lbs.)	Catalog Number	Item Code	A	B	Aprx. Wgt. (Lbs.)	Catalog Number	Item Code
1-5/8	2	4-7/8	MCB2632	47655	2-3/8	3	12	MCB3848	33314
	2-1/8	7	MCB2634	33204		4	35	MCB3864	33322
	2-1/4	9	MCB2636	33206	2-1/2	3	9-7/8	MCB4048	47661
	2-3/8	10-1/2	MCB2638	33208		3-1/8	13	MCB4050	33324
1-3/4	2	3-3/8	MCB2832	47656		3-1/4	15	MCB4052	33326
	2-1/8	5-1/8	MCB2834	47657		3-1/2	21	MCB4056	33328
	2-1/4	7-1/2	MCB2836	33218	3-3/4	27	MCB4060	33330	
	2-3/8	9	MCB2838	33220	4	33-1/2	MCB4064	33332	
	2-1/2	11	MCB2840	33222	4-1/4	40	MCB4068	33334	
	2-5/8	13-1/2	MCB2842	33224	4-1/2	46	MCB4072	33336	
	2-3/4	15-1/2	MCB2844	33226	5	61	MCB4080	33340	
	3	20	MCB2848	33230	5-1/2	78	MCB4088	33342	
	3-1/4	25	MCB2852	33232	2-3/4	3-1/2	19-1/2	MCB4456	47662
	3-1/2	31	MCB2856	33234		3-3/4	22-1/2	MCB4460	33354
	4	42-1/2	MCB2864	33238		4	28-1/2	MCB4464	33356
	4-1/4	50	MCB2868	33240		4-1/4	35	MCB4468	33358
1-7/8	2-1/4	5-1/2	MCB3036	47658	4-1/2	42	MCB4472	33360	
	2-3/8	7-1/2	MCB3038	33242	2-7/8	4	26-3/4	MCB4664	33364
	2-1/2	9-3/4	MCB3040	33244	3	3-1/2	11-1/2	MCB4856	47663
	2-5/8	12	MCB3042	33246		3-3/4	18-1/4	MCB4860	33366
	2-3/4	13	MCB3044	33248		4	24-1/2	MCB4864	33368
	3-1/4	23	MBC3052	33254		4-1/4	31	MCB4868	33370
2-1/4	3-7/8	MCB3236	47659	4-1/2		38	MCB4872	33372	
2	2-1/2	8-1/2	MCB3240	33256		4-3/4	45	MCB4876	33374
	2-5/8	10	MCB3242	33258	5	52	MCB4880	33376	
	2-3/4	12-1/4	MCB3244	33260	5-1/2	70	MCB4888	33378	
	3	16-1/2	MCB3248	33264	6	89-1/2	MCB4896	33380	
	3-1/4	22	MBC3252	33266	6-1/2	110	MCB48104	33382	
	3-1/2	29	MCB3256	33268	3-1/4	4	19-1/2	MCB5264	47664
	3-3/4	34	MCB3260	33270		4-1/4	25-1/2	MCB5268	33384
	4	39-1/2	MCB3264	33272		4-1/2	34	MCB5272	33386
	4-1/2	54	MCB3272	33274		4-3/4	41	MCB5276	33388
	5	69	MCB3280	33276	5	48	MCB5280	33390	
	6	105-1/2	MCB3296	33278	3-1/2	4-1/4	20-7/8	MCB5668	47665
	2-5/8	8-1/2	MCB3442	33280		4-1/2	30	MCB5672	33394
2-1/8	2-7/8	13	MCB3446	33284		4-3/4	35-1/2	MCB5676	33396
2-3/4	9	MCB3644	33294	5		44	MCB5680	33398	
2-1/4	3-1/4	19	MBC3652	33302	5-1/2	61	MCB5688	33400	
	3-1/2	25	MCB3656	33304	6	79	MCB5696	33402	
	3-3/4	30-1/2	MCB3660	33306	6-1/2	107-1/2	MCB56104	47666	
	4	37	MCB3664	33308	3-3/4	4-1/2	22-1/4	MCB6072	47667
4-1/4	43	MCB3668	33310	4-3/4		29	MCB6076	33404	
2	2-1/2	8-1/2	MCB3240	33256		5	38	MCB6080	33406
	2-5/8	10	MCB3242	33258		6	74	MCB6096	33410
	2-3/4	12-1/4	MCB3244	33260					
	3	16-1/2	MCB3248	33264					

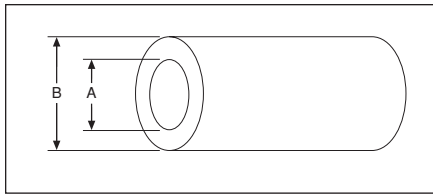
STANDARD TOLERANCES

Dimensions	Tolerance
A	1/2 - 4 4-1/4 - 8
B	1 - 4 4-1/4 - 9

All bars are 13" long.
Contact factory for bars longer than 13". Available in lengths up to 105".

BEAR-N-BRONZ 660 CAST BRONZE BEARINGS

CORED BARS



STANDARD TOLERANCES

Dimensions	Tolerance
A	1/2 - 4 4-1/4 - 8
B	1 - 4 4-1/4 - 9

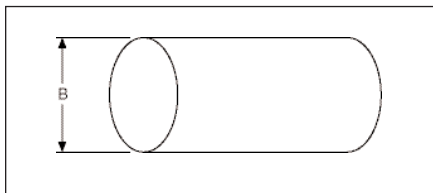
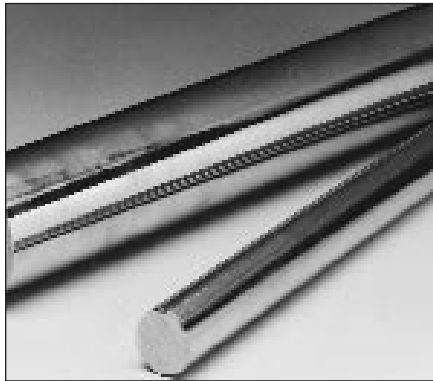
ALL DIMENSIONS IN INCHES ORDER BY CATALOG NUMBER OR ITEM CODE

A	B	Aprx. Wgt. (Lb.)	Catalog Number	Item Code	A	B	Aprx. Wgt. (Lb.)	Catalog Number	Item Code	
4	4-3/4	22-3/4	MCB6476	47668	5-1/4	7	77	MCB84112	47675	
	5	32-1/4	MCB6480	47669		7-1/2	97	MCB84120	33432	
	5-1/2	49	MCB6488	33412	5-1/2	6-1/2	43	MCB88104	47676	
	6	67-1/2	MCB6496	33414		7	67-1/4	MCB88112	47677	
	6-1/2	87	MCB64104	33416		7-1/2	91	MCB88120	33434	
	7	109	MCB64112	33510		8	113	MCB88128	33436	
4-1/4	7-1/2	134	MCB64120	33512	5-3/4	7-1/2	79	MCB92120	33438	
	5-1/2	41-1/4	MCB6888	47670	6	7	46-1/2	MCB96112	47678	
	6	61	MCB6896	33418		7-1/2	72-1/2	MCB96120	47679	
6-1/2	82	MCB68104	33514	8		94	MCB96128	33440		
4-1/2	6	36	MCB7288	47671	9	151	MCB96144	33522		
	6	56-1/2	MCB7296	47672	6-1/2	7-1/2	50-1/4	MCB104120	47681	
	6-1/2	75	MCB72104	33420		8	84	MCB104128	47682	
7	97	MCB72112	33422	9		130	MCB104144	33442		
4-3/4	6	67	MCB7696	47673	8	9	61	MCB128144	47684	
5	6	39	MCB8096	33428						
	7	81	MCB80112	33430						
	7-1/2	104	MCB80120	33516						
	8	130	MCB80128	33518						

All bars are 13" long.

Contact factory for bars longer than 13". Available in lengths up to 105".

SOLID BARS



STANDARD TOLERANCES

Dimensions	Tolerance
B	1/2 - 4 4-1/4 - 9

ALL DIMENSIONS IN INCHES ORDER BY CATALOG NUMBER OR ITEM CODE

B	Aprx. Wgt. (Lb.)	Catalog Number	Item Code	B	Aprx. Wgt. (Lb.)	Catalog Number	Item Code
1/2	1	MS8	33444	3	30	MS48	33484
5/8	1-1/2	MS10	33446	3-1/4	35-1/2	MS52	33486
3/4	2	MS12	33448	3-1/2	41	MS56	33488
7/8	2-3/4	MS14	33450	4	53	MS64	33492
1	3-1/2	MS16	33452	4-1/4	59	MS68	33494
1-1/8	4-1/2	MS18	33454	4-1/2	67	MS72	33496
1-1/4	5-1/2	MS20	33456	4-3/4	73	MS76	33536
1-3/8	6-1/2	MS22	33458	5	82	MS80	33498
1-1/2	7-1/2	MS24	33460	5-1/2	98	MS88	33500
1-5/8	8-1/2	MS26	33462	6	118	MS96	33502
1-3/4	10-1/4	MS28	33464	6-1/2	139	MS104	33538
1-7/8	11-1/2	MS30	33466	7	161	MS112	33504
2	14	MS32	33468	7-1/2	186	MS120	33506
2-1/4	17	MS36	33472	8	210-1/2	MS128	33508
2-1/2	21-1/2	MS40	33476	9	273	MS144	33544
2-5/8	23-1/2	MS42	33478				
2-3/4	25-1/2	MS44	33480				

All Bars are 13" long.

Contact Factory for Bars longer than 13". Available in lengths up to 105".

BRONZE BEARING EMERGENCY BANKS



Actual Size of Bank 10-1/2 x 13-1/2"

SAVES MONEY — Reduce time lost when breakdowns occur due to bearing failures. You own stock — any time — day or night.

COMPACT — Handy metal kit keeps bearings together in conveniently labeled compartments. Bearings where you want them — when you need them.

REFILLS AVAILABLE — Both kit and replacement bearings are available from stock.

See your Boston Gear Distributors, in all major cities — from coast to coast.

BOST-BRONZ EMERGENCY BEARING BANK

Order by Catalog Number-34500 BBB-1

There are two each of the 47 bearing sizes below in the bank.

B46-8	1/4 x 3/8 x 1	B913-12	9/16 x 13/16 x 1-1/2	B1618-16	1 x 1-1/8 x 2
B47-8	1/4 x 7/16 x 1	B1012-12	5/8 x 3/4 x 1-1/2	B1620-20	1 x 1-1/4 x 3
B48-8	1/4 x 1/2 x 1	B1013-16	5/8 x 13/16 x 2	B1622-24	1 x 1-3/8 x 3
B56-8	5/16 x 3/8 x 1	B1014-16	5/8 x 7/8 x 2	B1624-16	1 x 1-1/2 x 2
B58-8	5/16 x 1/2 x 1	B1016-16	5/8 x 1 x 2	B1721-20	1-1/16 x 1-5/16 x 2-1/2
B68-10	3/8 x 1/2 x 1-1/4	B1114-16	11/16 x 7/8 x 2	B1822-24	1-1/8 x 1-3/8 x 3
B69-10	3/8 x 9/16 x 1-1/4	B1214-12	3/4 x 7/8 x 1-1/2	B1824-16	1-1/8 x 1-1/2 x 2
B610-10	3/8 x 5/8 x 1-1/4	B1215-16	3/4 x 15/16 x 2	B1923-24	1-3/16 x 1-7/16 x 3
B79-10	7/16 x 9/16 x 1-1/4	B1216-20	3/4 x 1 x 2-1/2	B1924-24	1-3/16 x 1-1/2 x 3
B710-10	7/16 x 5/8 x 1-1/4	B1218-16	3/4 x 1-1/8 x 2	B2024-24	1-1/4 x 1-1/2 x 3
B711-12	7/16 x 11/16 x 1-1/2	B1316-16	13/16 x 1 x 2	B2026-16	1-1/4 x 1-5/8 x 2
B810-12	1/2 x 5/8 x 1-1/2	B1416-12	7/8 x 1 x 1-1/2	B2126-24	1-5/16 x 1-5/8 x 3
B812-16	1/2 x 3/4 x 2	B1418-20	7/8 x 1-1/8 x 2-1/2	B2228-16	1-3/8 x 1-3/4 x 2
B813-12	1/2 x 13/16 x 1-1/2	B1420-16	7/8 x 1-1/4 x 2	B2328-24	1-7/16 x 1-3/4 x 3
B814-12	1/2 x 7/8 x 1-1/2	B1519-16	15/16 x 1-3/16 x 2	B2430-16	1-1/2 x 1-7/8 x 2
B912-12	9/16 x 3/4 x 1-1/2	B1520-16	15/16 x 1-1/4 x 3		

BEAR-N-BRONZ EMERGENCY BEARING BANK

Order by Item Code

Bank #1 Item Code – 31300

Bank #2 Item Code – 31304

Bank #1		Bank #2			
<i>There are two each of the 30 bearing sizes below in the bank.</i>		<i>There are two each of the 20 bearing sizes below in the bank.</i>			
M46-10	1/4 x 3/8 x 1-1/4	M1824-16	1-1/8 x 1-1/2 x 2	M1219-12	3/4 x 1-3/16 x 1-1/2
M58-10	5/16 x 1/2 x 1-1/4	M1923-16	1-3/16 x 1-7/16 x 2	M1318-12	13/16 x 1-1/8 x 1-1/2
M69-10	3/8 x 9/16 x 1-1/4	M1926-16	1-3/16 x 1-5/8 x 2	M1419-8	7/8 x 1-3/16 x 1
M710-10	7/16 x 5/8 x 1-1/4	M2026-20	1-1/4 x 1-5/8 x 2-1/2	M1420-12	7/8 x 1-1/4 x 1-1/2
M812-12	1/2 x 3/4 x 1-1/2	M2228-18	1-3/8 x 1-3/4 x 2-1/4	M1620-16	1 x 1-1/4 x 2
M816-16	1/2 x 1 x 2	M2230-24	1-3/8 x 1-7/8 x 3	M1624-16	1 x 1-1/2 x 2
M912-12	9/16 x 3/4 x 1-1/2	M2328-24	1-7/16 x 1-3/4 x 3	M1824-16	1-1/8 x 1-1/2 x 2
M1014-12	5/8 x 7/8 x 1-1/2	M2330-32	1-7/16 x 1-7/8 x 4	M1923-16	1-3/16 x 1-7/16 x 2
M1115-12	11/16 x 15/16 x 1-1/2	M2428-18	1-1/2 x 1-3/4 x 2-1/4	M2028-16	1-1/4 x 1-3/4 x 2
M1216-12	3/4 x 1 x 1-1/2	M2430-20	1-1/2 x 1-7/8 x 2-1/2	M2126-16	1-5/16 x 1-5/8 x 2
M1316-12	13/16 x 1 x 1-1/2	M2432-28	1-1/2 x 2 x 3-1/2	M2228-16	1-3/8 x 1-3/4 x 2
M1420-14	7/8 x 1-1/4 x 1-3/4	M2630-30	1-5/8 x 1-7/8 x 3-3/4	M2330-24	1-7/16 x 1-7/8 x 3
M1520-20	15/16 x 1-1/4 x 2-1/2	M2632-24	1-5/8 x 2 x 2	M2428-18	1-1/2 x 1-3/4 x 2-1/4
M1620-16	1 x 1-1/4 x 2	M2832-32	1-3/4 x 2 x 4	M2430-20	1-1/2 x 1-7/8 x 2-1/2
M1624-16	1 x 1-1/2 x 2			M2432-20	1-1/2 x 2 x 2-1/2
M1723-20	1-1/16 x 1-7/16 x 2-1/2			M2630-18	1-5/8 x 1-7/8 x 2-1/4
				M2632-24	1-5/8 x 2 x 3
				M2832-24	1-3/4 x 2 x 3
				M3238-32	2 x 2-3/8 x 4
				M3644-32	2-1/4 x 2-3/4 x 4

BOSStonE F-1 GLASS FILLED TEFLON BEARINGS



BOSStonE F-1 glass filled material is completely self-lubricating with outstanding wear and corrosion resistance properties, machined from extruded rods to close tolerances. BOSStonE F-1 material has a wide temperature capability and an excellent PV value. BOSStonE F-1 bearings are green in color.

Lubrication of these bearings is not required. Teflon®, the major ingredient of BOSStonE F-1 material (75%), has excellent self-lubricating characteristics and a low coefficient of friction. The remaining 25% is glass.

BOSStonE F-1 bearing material has excellent strength and wearability and was developed to withstand high loads at moderate speeds. The allowable operating temperature range is -400° to $+550^{\circ}$ F.

Typical applications for BOSStonE F-1 bearings are textile machinery, farm implements, food processing equipment, pulp and paper machinery, business machinery, aircraft, home appliances, automotive and machine tools as well as many others, in both the electrical and chemical fields.

Cylindrical, Flanged and Thrust Bearings and Solid Bars are stocked in BOSStonE F-1 material.

SELECTION

In general, sleeve bearings should be selected with a length of one to two times the shaft diameter and an O.D. approximately 25% larger than the shaft diameter.

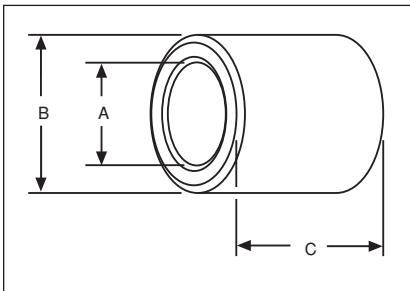
A general guide to determination of limiting load and velocity values for sleeve bearings has been established by the use of PV calculations. PV represents Pressure x Velocity, for example 100 psi x 20 fpm yields a PV of 2000.

Maximum PV value for BOSStonE F-1 bearings: 20,000 (50,000 for intermittent service).

For complete selection and application information, see Engineering Section, Pages 46-54.

BOSStonE F-1 GLASS FILLED TEFLON BEARINGS

PLAIN CYLINDRICAL BEARINGS



ALL DIMENSIONS IN INCHES
ORDER BY CATALOG NUMBER OR ITEM CODE

A	B	C	Catalog Number	Item Code	A	B	C	Catalog Number	Item Code
1/8	1/4	1/4	P24-2	56819	3/4	1	1/2	P1216-4	56845
.129	.251	3/8	P24-3	56820	.755	1.001	3/4	P1216-6	56846
		1/4	P35-2	56821			1	P1216-8	56847
3/16	5/16	3/8	P35-3	56822	7/8	1-1/8	3/4	P1418-6	56848
.191	.313	1/2	P35-4	56823	.880	1.126	1	P1418-8	56849
1/4	3/8	1/4	P46-2	56824	1	1-1/4	3/4	P1620-6	56850
.254	.376	3/8	P46-3	56825	1.005	1.251	1	P1620-8	56851
		1/2	P46-4	56826			1-1/2	P1620-12	56852
5/16	1/2	3/8	P58-3	56827	1-1/8	1-3/8	3/4	P1822-6	56853
.316	.501	1/2	P58-4	56828	1.130	1.376	1	P1822-8	56854
		3/4	P58-4	56828			1-1/2	P1822-12	56855
3/8	9/16	3/8	P69-3	56829	1-1/4	1-1/2	3/4	P2024-6	56856
.379	.563	1/2	P69-4	56830	1.255	1.501	1	P2024-8	56857
		3/4	P69-6	56831			1-1/2	P2024-12	56858
7/16	5/8	3/8	P710-3	56832	1-3/8	1-5/8	1	P2226-8	56859
.441	.626	1/2	P710-4	56833	1.380	1.626	1-1/2	P2226-12	56860
		3/4	P710-6	56834					
1/2	3/4	1/2	P812-4	56835	1-1/2	1-3/4	1	P2428-8	56861
.504	.751	3/4	P812-6	56836	1.506	1.751	1-1/2	P2428-12	56862
		1	P812-8	56837			2	P2428-16	56863
5/8	7/8	5/8	P1014-5	56841	1-5/8	1-7/8	1-3/4	P2630-14	56864
.630	.876	3/4	P1014-6	56842	1.631	1.876			
		1	P1014-8	56843					
11/16	15/16	3/4	P1115-6	56844	1-3/4	2	1-3/4	P2832-14	56865
.693	.938				1.756	2.001			
					1-7/8	2-1/8	2	P3034-16	56866
					1.881	2.126			
					2	2-1/4	2	P3236-16	56867
					2.006	2.251			

On A and B dimensions, tolerances apply to actual (decimal) dimensions

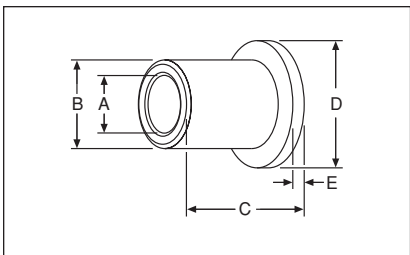
STANDARD TOLERANCES

Dimensions	Tolerance
A	All
B	
C	All

STANDARD CONCENTRICITY

Dimensions	T.I.R. (A to B)
A	.003
A	.004

FLANGED BEARINGS



ALL DIMENSIONS IN INCHES
ORDER BY CATALOG NUMBER OR ITEM CODE

A	B	C	D	E	Catalog Number	Item Code
3/16	5/16	1/4	.437	1/16	FP35-2	56868
.191	.313	1/2			FP35-4	56869
1/4	3/8	3/8	.500	1/16	FP46-3	56870
.254	.376	1/2			FP46-4	56871
3/8	5/8	1/2	.875	1/8	FP610-4	56872
.379	.626	3/4			FP610-6	56873
1/2	3/4	1/2	1.000	1/8	FP812-4	56874
.504	.751	3/4			FP812-6	56875
		1			FP812-8	56876
5/8	7/8	3/4	1.000	1/8	FP1014-6	56877
.630	.876	1			FP1014-8	56878
3/4	1	1	1.250	1/8	FP1216-8	56879
.755	1.001					

STANDARD TOLERANCES

Dimensions	Tolerance
A	All
B	
C	All
D	All
E	All

STANDARD CONCENTRICITY

Dimensions	T.I.R. (A to B)
A	.003